



lichtwerk
inspired by light

serio



serio

Multifunctional lighting system

Project: trade fair booth
Photographer: lichtwerk GmbH

is a brand new multifunctional lighting system with direct and indirect ratio. It is made from valuable aluminium and can be used as single luminaire or lighting structure. With its slim body the pendant luminaire offers a variety of possible uses: From general illumination over accent lighting to very complex lighting structures. serio makes it possible to realize one lighting concept throughout a whole building with a clear stylistic idiom. A wall mounted version complements the luminaire family.

lichtwerk has developed a variety of system components to fit highly sophisticated tasks: For general illumination serio is available with an opal endless diffusor. This provides the freedom of creating a seamless appearance even with long lighting systems. For accent lighting a combination with surface mounted or build in spotlights is a very good choice. A variant with a fully integrated three-phase-track including DALI capabilities offers the option to integrate different track lights.

A satin-finished diffusor ensures a homogenous indirect illumination for a harmonic atmosphere throughout all system components. Different lengths and L-shaped components enable a variable and complex setup with a consistent illumination. The flexible serio system fits nearly every demand: Such as representative spaces, shops, retail or offices, meeting and show rooms, circulation or waiting areas.

INDEX

P.04	serio configurator
P.06	serio planning example
P.06	Pendant luminaires
P.10	serio-HIOS
P.14	serio-HIG
P.16	serio-HIMP
P.20	serio Q-HIG
P.24	Wall luminaires
P.26	serio-WIFA
P.28	Pendant system
P.30	serio-HITOS
P.34	serio-HIT
P.36	serio-HITES
P.38	serio-HITS
P.40	serio-HITD
P.42	spotlight emphara
P.44	spotlight spotty
	Corner profile
P.48	serio-HITL/HITR
P.50	serio-HITL/-HITR 135°
P.52	serio-HITBL/-HIBTR
P.56	Wall system
P.58	serio-WITFA

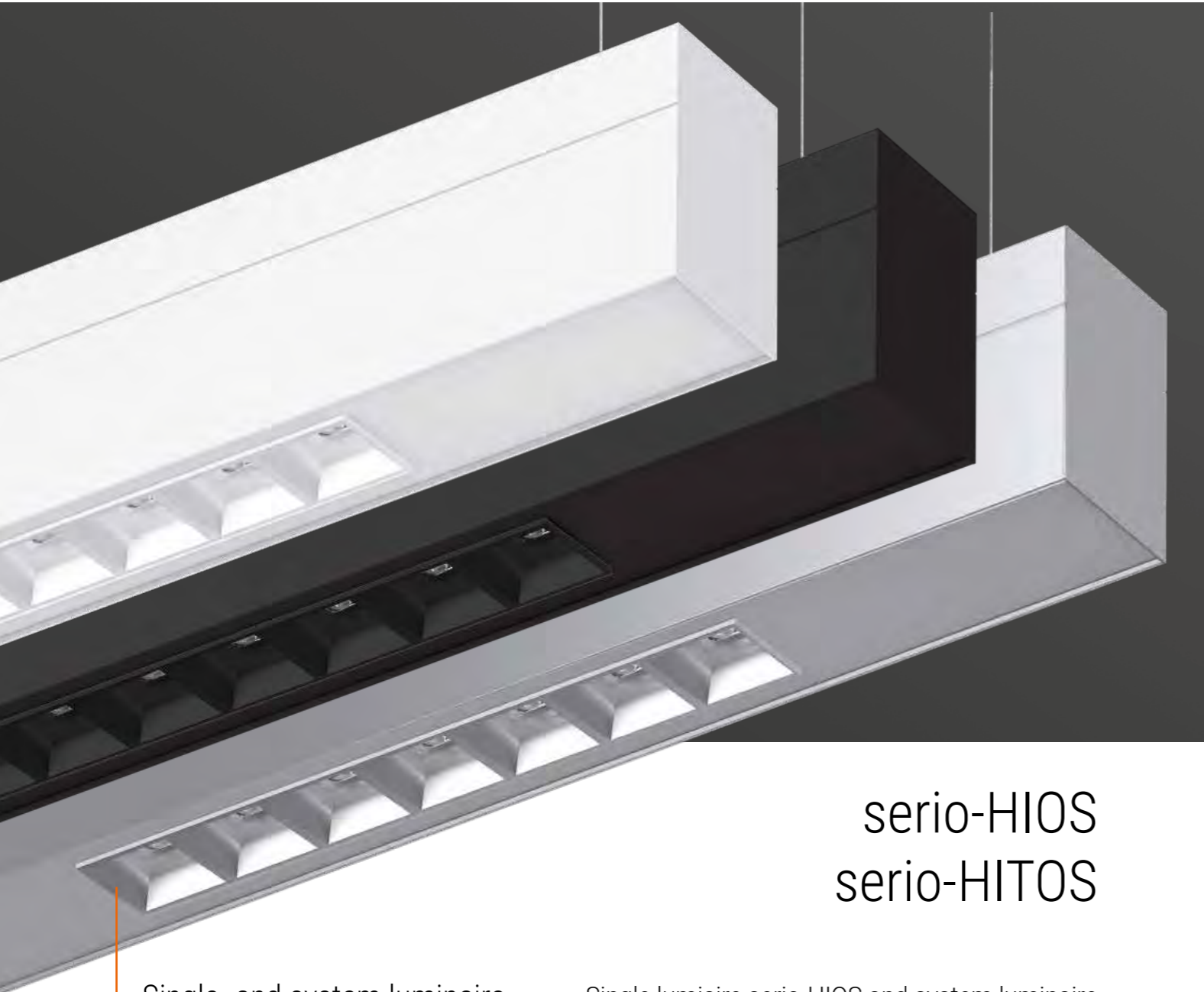
Complex lighting structures
just in a few steps - give it a try!

On our website www.lichtwerk.de you will find a configuration tool for our serio lighting system. With this, structures can be designed and changed quick and easy. You will also receive a compilation of informations based on your configuration, such as system combination, catalog prices, tender texts, dxf-files, etc.

Take a look and be surprised by the possibilities that serio offers.



serio-HIOS/-HITOS - the new office variant!



serio-HIOS
serio-HITOS

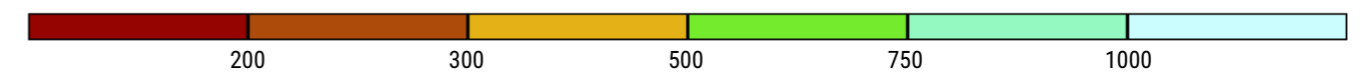
Single- and system luminaire

3000 lm **9**

Single luminaire serio-HIOS and system luminaire serio-HITOS fit in nearly every office surrounding. Available in three colours, four lengths and two colour temperatures the serio family is very flexible. The micro-cell grid in combination with single lens technology leads to glare free workspace lighting. For VDU workstations $65^\circ < 3000 \text{cd/m}^2$, $\text{UGR} \leq 19$ according to DIN EN 12464-1. The homogenous indirect ratio throughout all system components delivers an even ceiling illumination.



Illuminance [lx]



Calculation basis

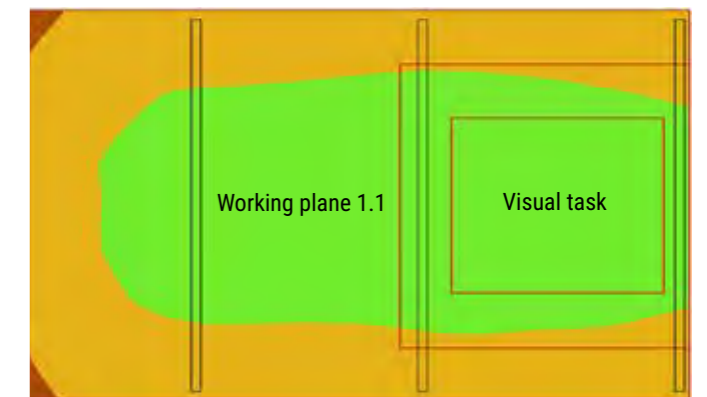
Type:
3x Lighting system with each
2x serio-HITOS/1700 5300 840 DALI
Maintenance factor: 0,80

Visual task:
Em: 547 Lux
Emin: 518 Lux
Emin/Em (Uo): 0,95
UGR: < 10,1

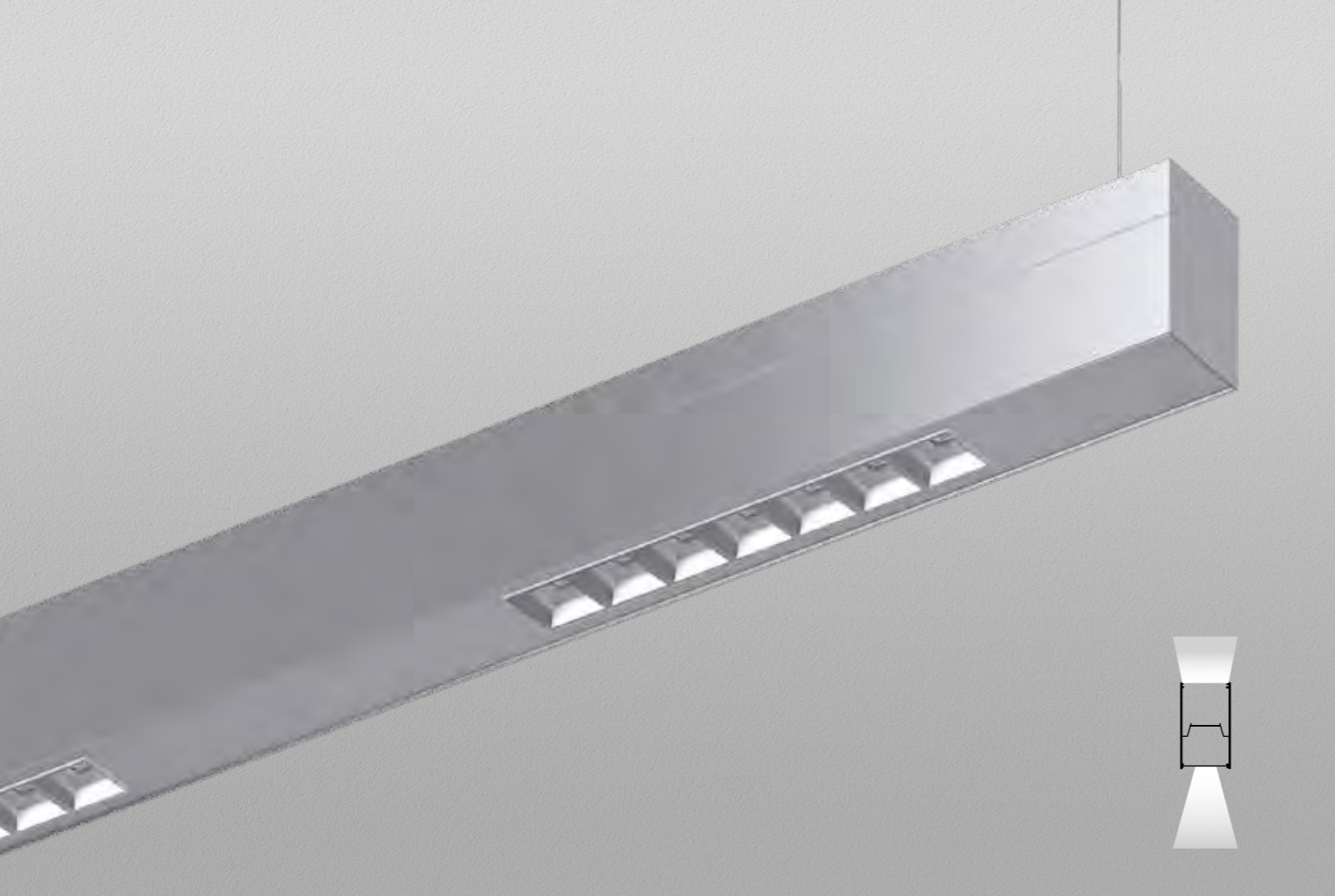
Working plane 1.1:
Em: 474 Lux
Emin: 318 Lux
Emin/Em (Uo): 0,67

Overall power consumption (with ED): 300,6 W

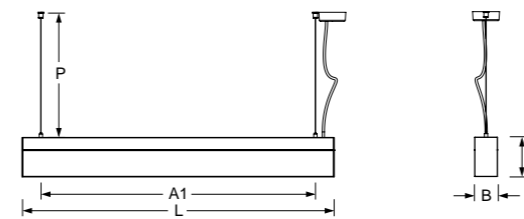
Room dimensions: 4,5 m x 6,0 m x 3,0 m







Type	L	B	H	A1	P _{min}	P _{max}
serio-HIOS/1100	1127	61	106	1025	150	2000
serio-HIOS/1700	1687	61	106	1585	150	2000
serio-HIOS/2200	2247	61	106	2145	150	2000
serio-HIOS/2800	2807	61	106	2705	150	2000



serio-HIOS/1700
6200lm 840

η_{LB} 100%

Direct 48%
Indirect 52%
UGR lat. 12,3
UGR long. 12,2

A++

serio-HIOS

IP20

Housing

Aluminium profile, naturally anodised. Face ends sheet steel, painted white aluminium. Also available in textured paint traffic white (similar to RAL 9016) or deep black (similar to RAL 9005). Other housing colours on request.

Lighting technology -HIOS

Direct/indirect distribution, DALI Variant separately dimmable.
Direct distribution via integrated micro-cell grid.
Indirect distribution via white-opal, satin-finished acrylic diffuser.
For VDU workstations $65^\circ < 3000\text{cd/m}^2$, UGR ≤ 19 according to DIN EN 12464-1.

Rated life time = L80 B10 50.000h.

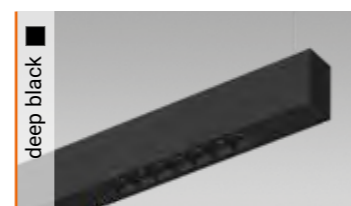
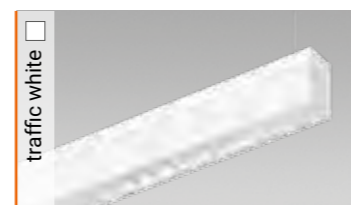
Light colour: 4000K. Optional: 3000K. Other light colours on request.

Suspension

Single wire suspension with quick-adjust coupling, free height adjustment between 150 and 2000mm.

Miscellaneous

Translucent connection cable pre-mounted.



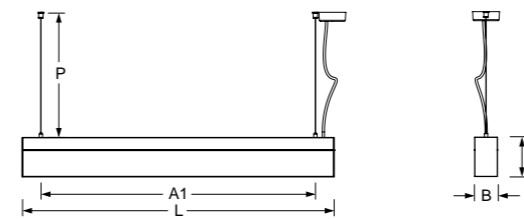
Type	Colour	LED Specification	P _{sys} (W)	ED	DALI	
serio-HIOS/1100		LED 4100lm 840	32	547 4144 100	547 4146 600	4,8
serio-HIOS/1700		LED 6200lm 840	47	547 6144 100	547 6146 600	6,6
serio-HIOS/2200		LED 8200lm 840	63	547 8144 100	547 8146 600	8,4
serio-HIOS/2800		LED 10400lm 840	80	547 0144 100	547 0146 600	10,3

► Please refer to the current data for LED luminaires at www.lichtwerk.de





Type	L	B	H	A1	P _{min}	P _{max}
serio-HIG/1100	1127	61	106	1025	150	2000
serio-HIG/1400	1407	61	106	1305	150	2000
serio-HIG/2200	2247	61	106	2145	150	2000
serio-HIG/2800	2807	61	106	2705	150	2000



serio-HIG/1400
7700lm 840

η_{LB} 100%

Direct 64 %
Indirect 36 %
UGR lat. 22,0
UGR long. 23,2

A++

serio-HIG

IP20

Housing

Aluminium profile, naturally anodised. Face ends sheet steel, painted white aluminium. Also available in textured paint traffic white (similar to RAL 9016) or deep black (similar to RAL 9005). Other housing colours on request.

Lighting technology -HIG

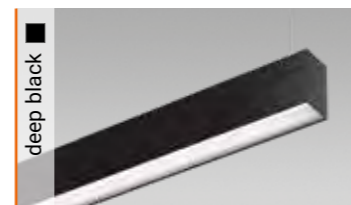
Direct/indirect distribution, DALI Variant separately dimmable.
Direct- and indirect distribution via white-opal, satin-finished acrylic diffusor.
Rated life time = L80 B10 50.000h.
Light colour: 4000K. Optional: 3000K. Other light colours on request.

Suspension

Single wire suspension with quick-adjust coupling, free height adjustment between 150 and 2000mm.

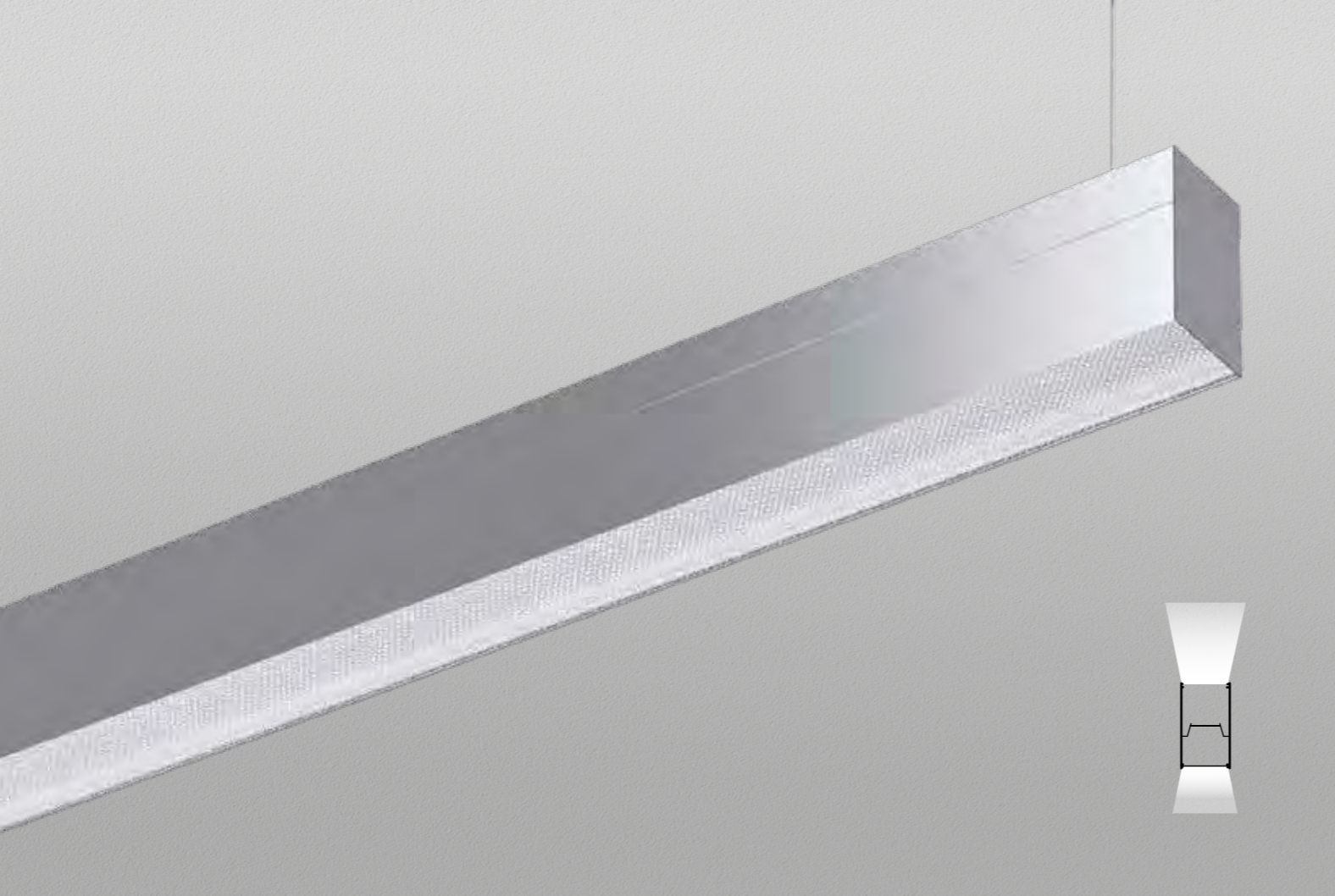
Miscellaneous

Translucent connection cable pre-mounted.

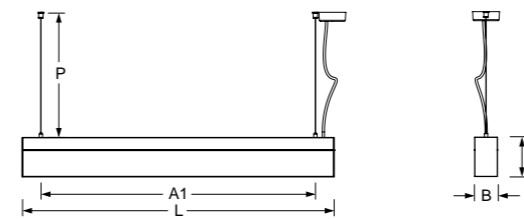


Type	Colour	LED Specification	P _{sys} (W)	ED	DALI	
serio-HIG/1100		LED 6000lm 840	55	543 4144 180	543 4146 680	4,3
serio-HIG/1400		LED 7700lm 840	71	543 5144 180	543 5146 680	5,2
serio-HIG/2200		LED 12000lm 840	110	543 8144 180	543 8146 680	8,4
serio-HIG/2800		LED 15400lm 840	142	543 0144 180	543 0146 680	10,2

► Please refer to the current data for LED luminaires at www.lichtwerk.de



Type	L	B	H	A1	P _{min}	P _{max}
serio-HIMP/1100	1127	61	106	1025	150	2000
serio-HIMP/1400	1407	61	106	1305	150	2000
serio-HIMP/2200	2247	61	106	2145	150	2000
serio-HIMP/2800	2807	61	106	2705	150	2000



serio-HIMP/1400
4200lm 840

η_{LB} 100%

Direct 35%
Indirect 65%
UGR lat. 11,3
UGR long. 12,9

A++

serio-HIMP

IP20

Housing

Aluminium profile, naturally anodised. Face ends sheet steel, painted white aluminium. Also available in textured paint traffic white (similar to RAL 9016) or deep black (similar to RAL 9005). Other housing colours on request.

Lighting technology -HIMP

Direct/indirect distribution, DALI Variant separately dimmable.
Direct distribution via microprismatic panel with conical glare elimination.
Indirect distribution via white-opal, satin-finished acrylic diffuser.
For VDU workstations $65^\circ < 3000\text{cd/m}^2$, UGR ≤ 19 according to DIN EN 12464-1. Rated life time = L80 B10 50.000h.
Light colour: 4000K. Optional: 3000K. Other light colours on request.

Suspension

Single wire suspension with quick-adjust coupling, free height adjustment between 150 and 2000mm.

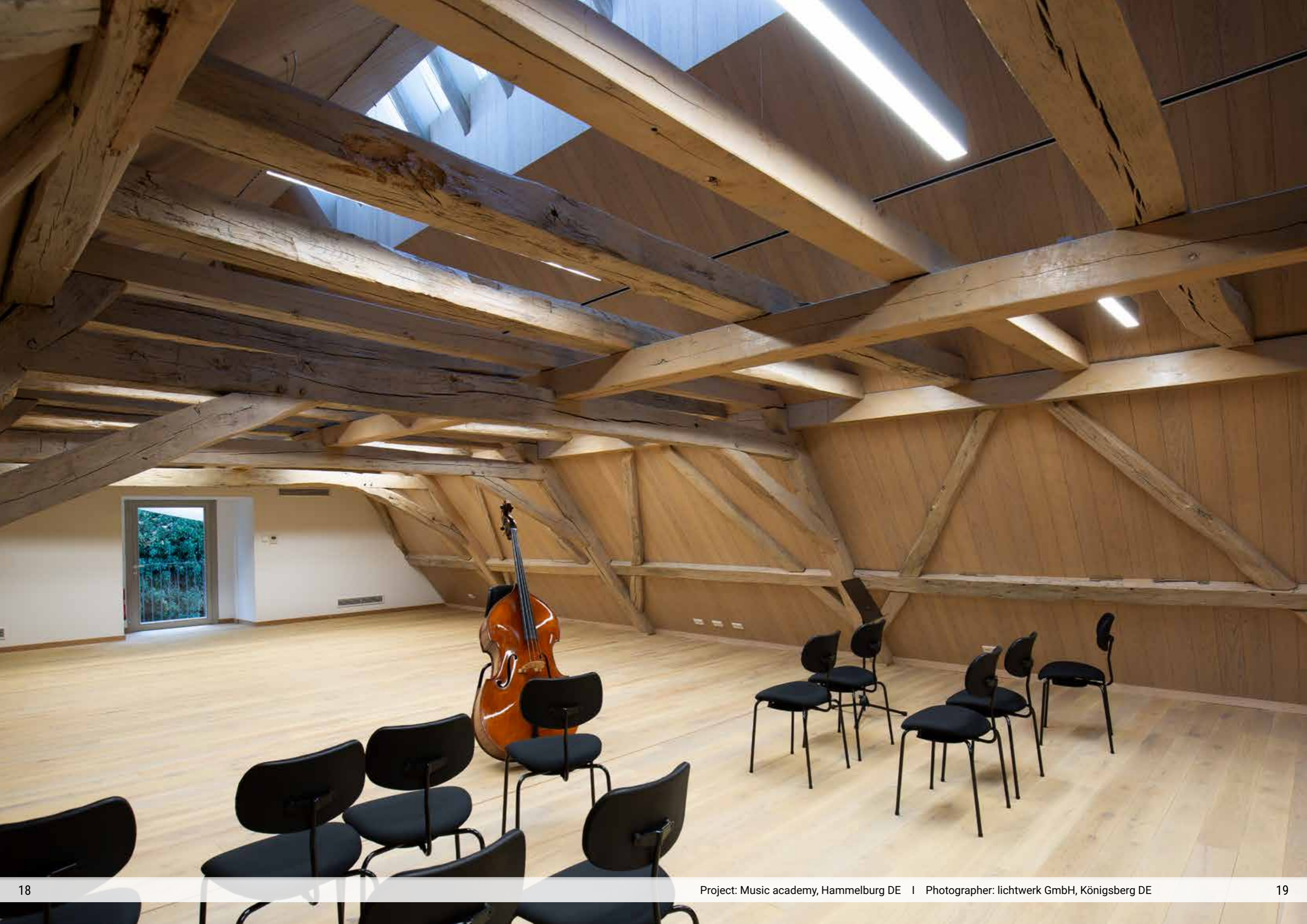
Miscellaneous

Translucent connection cable pre-mounted.



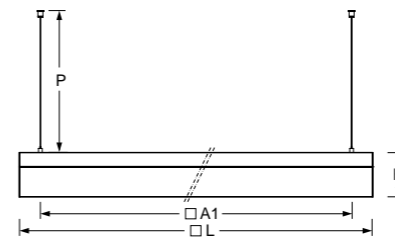
Type	Colour	LED Specification	P _{sys} (W)	ED	DALI	
serio-HIMP/1100		LED 3300lm 840	30	543 4144 150	543 4146 650	4,6
serio-HIMP/1400		LED 4200lm 840	37	543 5144 150	543 5146 650	5,3
serio-HIMP/2200		LED 6600lm 840	59	543 8144 150	543 8146 650	9
serio-HIMP/2800		LED 8400lm 840	74	543 0144 150	543 0146 650	10,7

► Please refer to the current data for LED luminaires at www.lichtwerk.de





Type	L	H	A1	P _{min}	P _{max}
serio Q 1200-HIG	1220	106	1160	150	2000



serio Q 1200-HIG
24100lm 840

η_{LB} 100%

Direct 64%
Indirect 36%
UGR lat. 21,7
UGR long. 22,9

A++

serio Q-HIG

IP20

Housing

Aluminium profile in square design, natural anodised, completely assembled. Also available in textured paint traffic white (similar to RAL 9016) or deep black (similar to RAL 9005). Other housing colours on request.

Lighting technology -HIG

Direct/indirect distribution, DALI Variant separately dimmable. Direct- and indirect distribution via white-opal, satin-finished acrylic diffusor. Rated life time = L80 B10 50.000h. Light colour: 4000K. Optional: 3000K. Other light colours on request.

Suspension

Four wire suspensions with rapid coupling, free height adjustment between 150 and 2000mm.

Miscellaneous

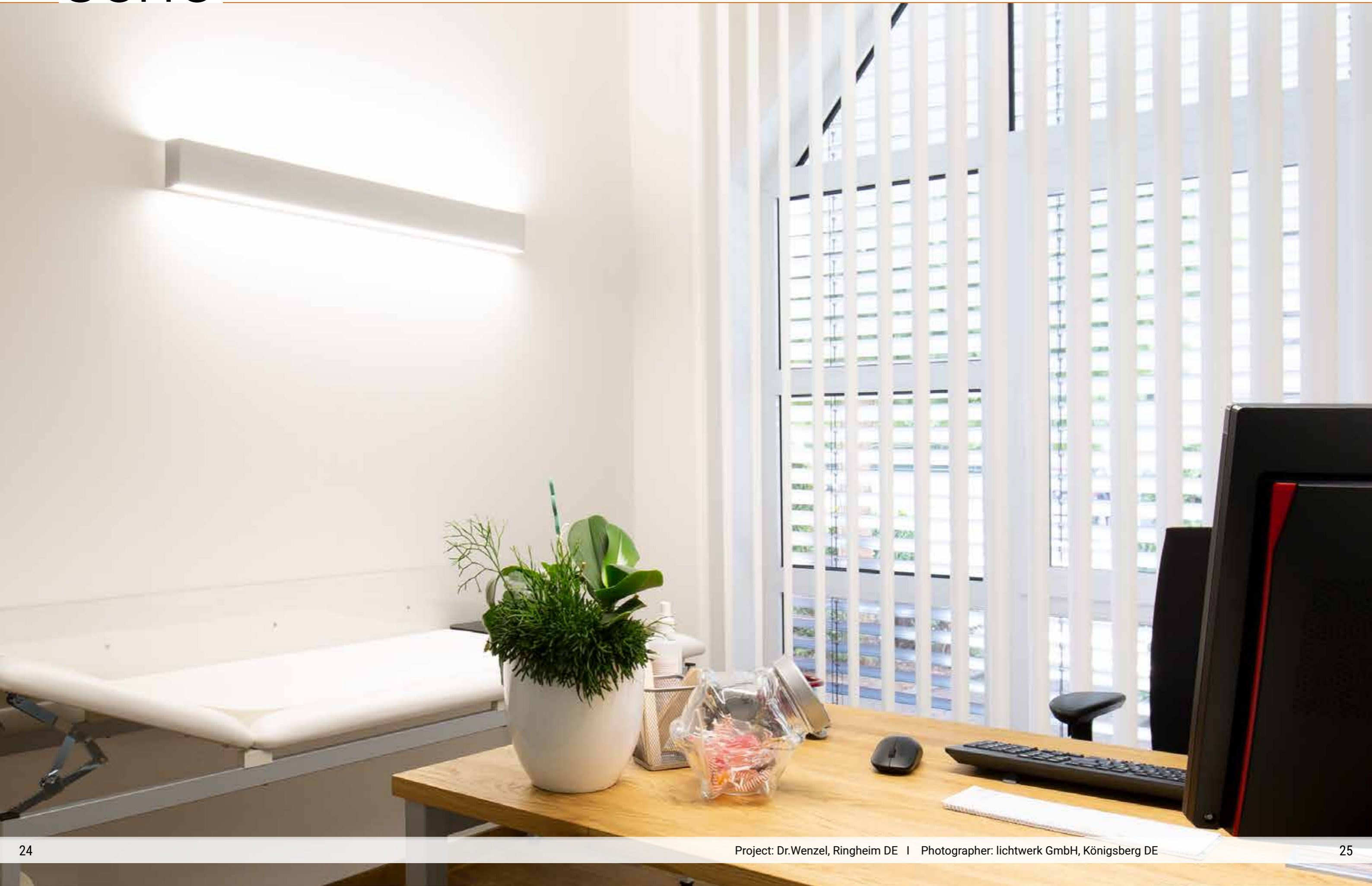
Translucent connection cable pre-mounted.

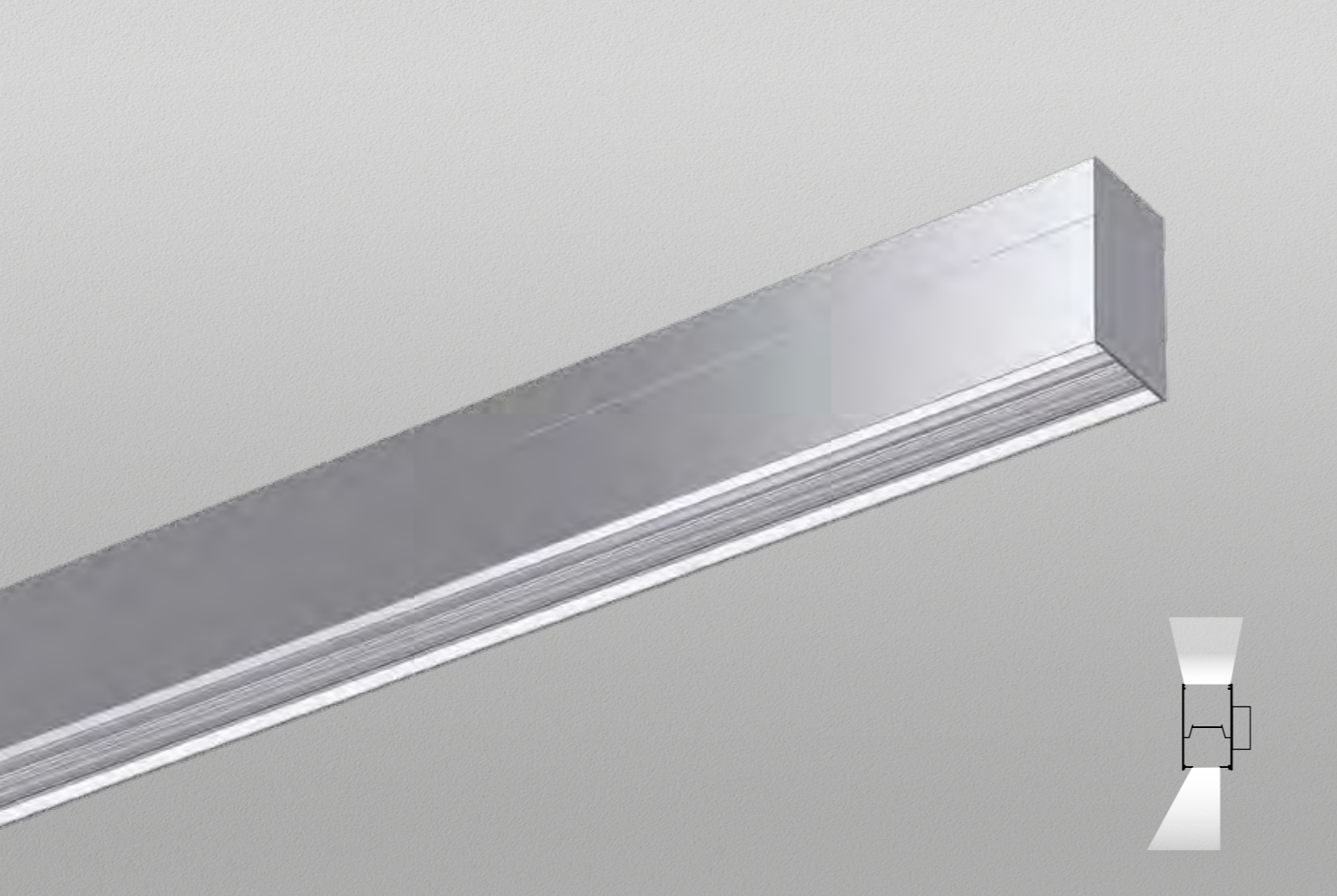


Type	Colour	LED Specification	P _{sys} (W)	ED	DALI	
serio Q 1200-HIG		LED 24100lm 840	220	544 4144 180	544 4146 680	19

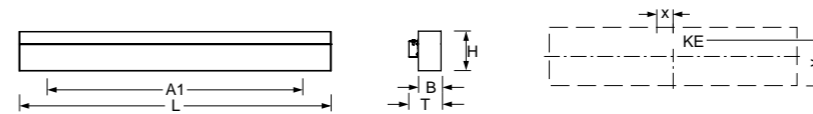
► Please refer to the current data for LED luminaires at www.lichtwerk.de







Type	L	B	T	H	A1	X	Y
serio-WIFA/0500	567	61	86	106	330	238	72
serio-WIFA/0800	847	61	86	106	610	0	72
serio-WIFA/1100	1127	61	86	106	890	0	72
serio-WIFA/1400	1407	61	86	106	1170	0	72
serio-WIFA/2200	2247	61	86	106	2010	0	72
serio-WIFA/2800	2807	61	86	106	2570	0	72



serio-WIFA/1400
8000lm 840

η_{LB} 100%

Direct 45%
Indirect 55%
UGR lat. 22,3
UGR long. 20,2

A++

serio-WIFA

IP20

Housing

Aluminium profile, naturally anodised. Face ends sheet steel, painted white aluminium. Also available in textured paint traffic white (similar to RAL 9016) or deep black (similar to RAL 9005). Other housing colours on request.

Lighting technology -WIFA

Direct/indirect distribution, DALI variant separately dimmable.
Direct asymmetric light distribution via Fresnel lens made from acrylic.
Indirect share via white-opal, satin-finished acrylic profile.
Rated life time = L80 B10 50.000h.
Light colour: 4000K. Optional: 3000K. Other light colours on request.

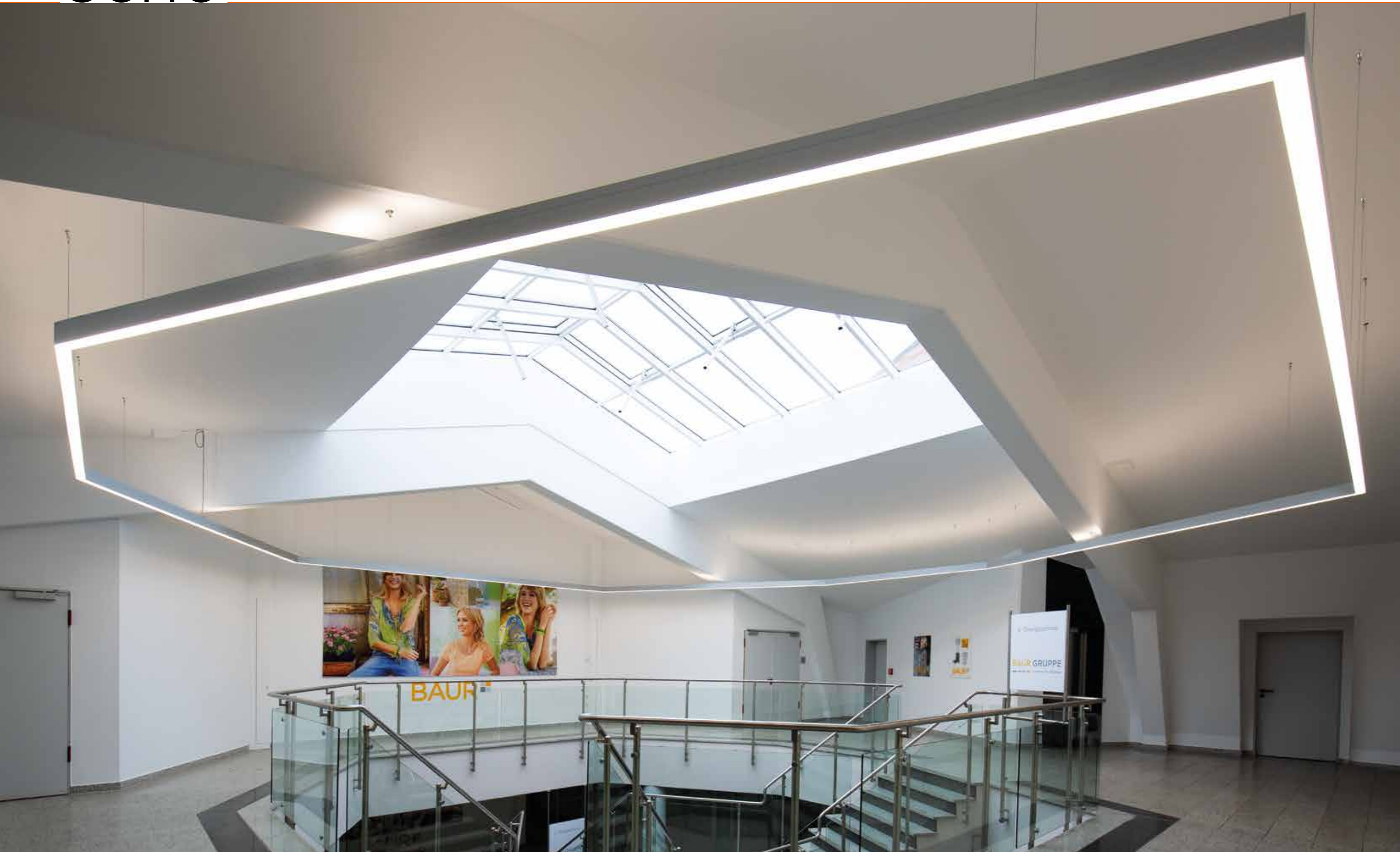
Miscellaneous

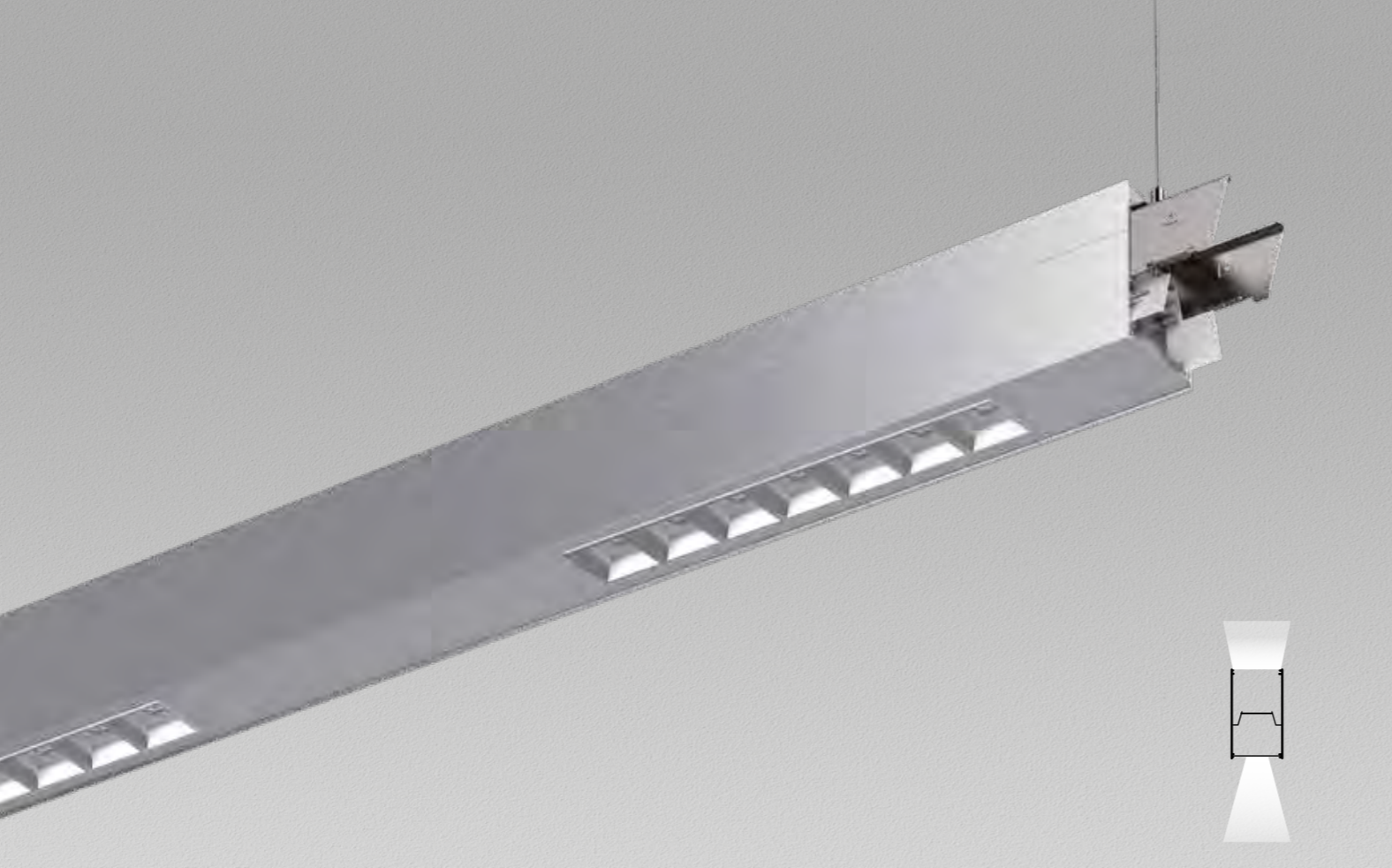
Electrical connection via three-pole, for dimmable luminaires five-pole connection terminal with plug-in contacts; with integrated protective earth conductor connection and release button, suitable for rigid and flexible conductors up to 2.5mm².



Type	Colour	LED Specification	P _{sys} (W)	ED	DALI	
serio-WIFA/0500		LED 3100lm 840	27	443 2144 180	443 2146 680	3
serio-WIFA/0800		LED 4700lm 840	41	443 3144 180	443 3146 680	4,2
serio-WIFA/1100		LED 6200lm 840	54	443 4144 180	443 4146 680	5,7
serio-WIFA/1400		LED 8000lm 840	70	443 5144 180	443 5146 680	6,9
serio-WIFA/2200		LED 12400lm 840	108	443 8144 180	443 8146 680	11,3
serio-WIFA/2800		LED 15900lm 840	139	443 0144 180	443 0146 680	13

► Please refer to the current data for LED luminaires at www.lichtwerk.de





serio-HITOS LB IP20

Housing

Aluminium profile, naturally anodised. Also available in textured paint traffic white (similar to RAL 9016) or deep black (similar to RAL 9005). Other housing colours on request. Other housing colours on request.

serio-HITOS LB System luminaire with integrated micro-cell grid.

Lighting technology -HITOS

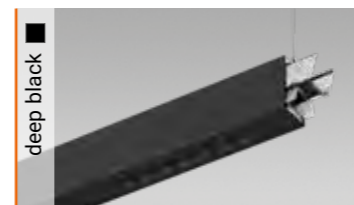
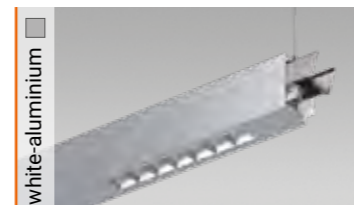
Direct/indirect distribution, DALI Variant separately dimmable. Constant indirect share via white-opal, satin-finished acrylic diffuser throughout all system components. Direct share via integrated micro cell grid. For VDU workstations $65^\circ < 3000\text{cd}/\text{m}^2$, UGR ≤ 19 according to DIN EN 12464-1. Rated life time = L80 B10 50.000h. Light colour: 4000K. Optional: 3000K. Other light colours on request.

Suspension

For system profile serio-HITOS LB one wire suspension is in scope of delivery. Free height adjustment between 150 and 2000mm.

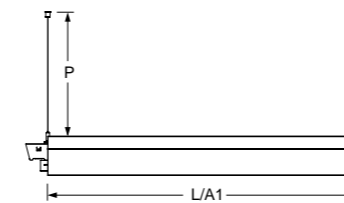
Accessories

For open lighting system designs one face-end set serio-HITE A/E, for closed lighting system designs one connection cable serio-AL must be ordered separately.

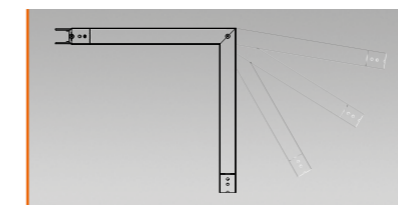
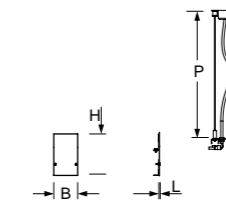


Type	L	B	H	A1	P _{min}	P _{max}
serio-HITOS/1100	1125	61	106	1125	150	2000
serio-HITOS/1700	1685	61	106	1685	150	2000
serio-HITOS/2200	2245	61	106	2245	150	2000
serio-HITOS/2800	2805	61	106	2805	150	2000

serio-HITos LB



serio-HITE A/E LB



Corner profile see Page 48

serio-HITOS/1700
6200lm 840

η_{LB} 100%

Direct 48 %
Indirect 52 %
UGR lat. 12,3
UGR long. 12,2

A++

Type	Colour	LED Specification	P _{sys} (W)	ED	DALI	
serio-HITOS/1100	■	LED 2500lm 840	17	547 4044 175		4,8
serio-HITOS/1100	■	LED 4100lm 840	32	547 4144 175	547 4146 675	4,8
serio-HITOS/1700	■	LED 3800lm 840	26	547 6044 175		6,7
serio-HITOS/1700	■	LED 6200lm 840	47	547 6144 175	547 6146 675	6,7
serio-HITOS/2200	■	LED 5000lm 840	35	547 8044 175		8,6
serio-HITOS/2200	■	LED 8200lm 840	63	547 8144 175	547 8146 675	8,6
serio-HITOS/2800	■	LED 6300lm 840	44	547 0044 175		10,5
serio-HITOS/2800	■	LED 10400lm 840	80	547 0144 175	547 0146 675	10,5

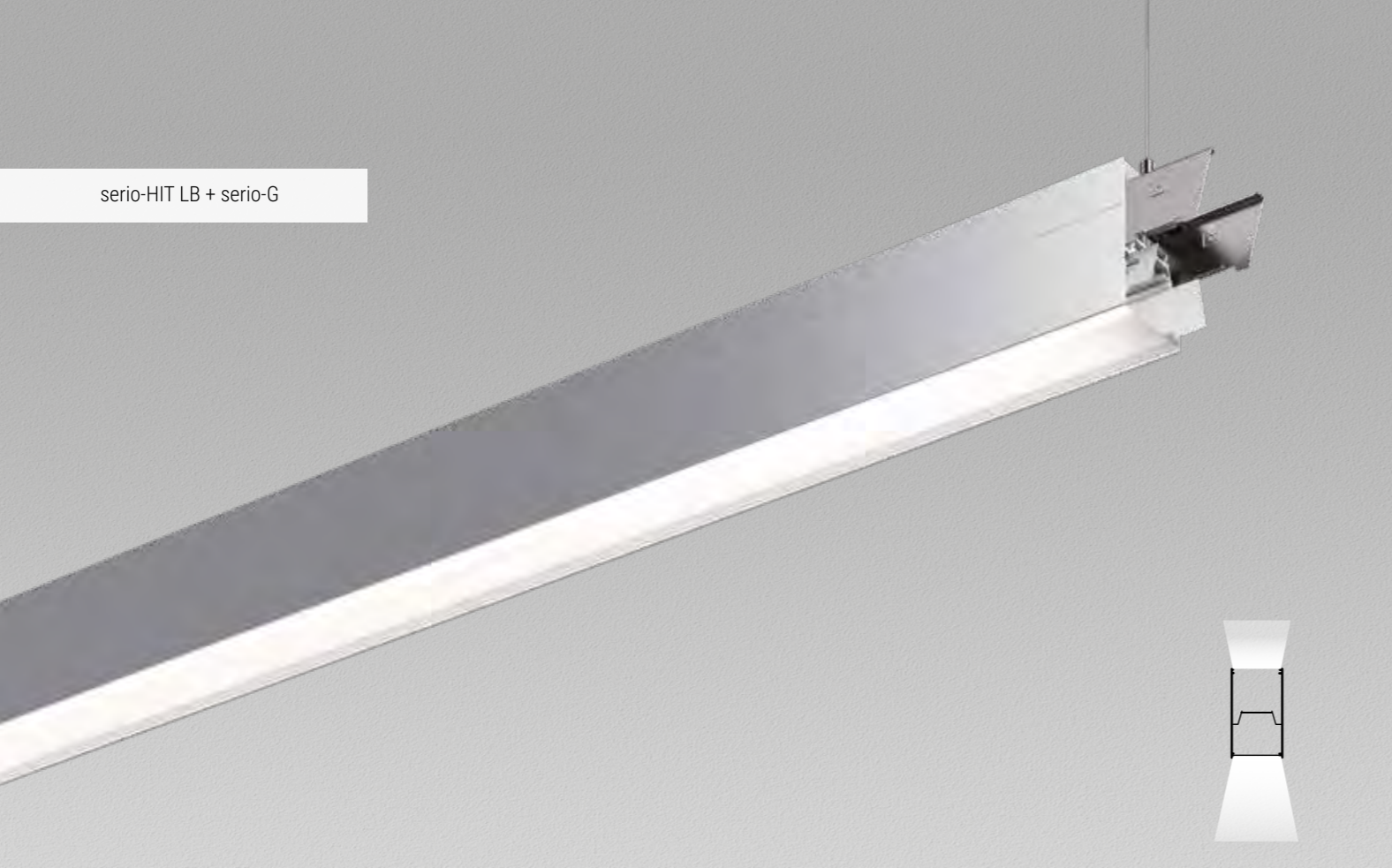
► Please refer to the current data for LED luminaires at www.lichtwerk.de



Accessories	Type	Colour	Material	Details	Item-number	
Face-end set	serio-HITE A/E LB Set 3x0,75	■	Mix	2x face ends, 1x suspension 1x connection cable 3 pol. incl. ceiling canopy	543 0137 105	0,4
	serio-HITE A/E LB Set 5x0,75	■	Mix	2x face ends, 1x suspension 1x connection cable 5 pol. incl. ceiling canopy	543 0157 105	0,5
Connection cable	serio-AL 3x0,75	■	Mix	Connection cable 3 pol. incl. ceiling canopy	543 0037 105	0,2
	serio-AL 5x0,75	■	Mix	Connection cable 5 pol. incl. ceiling canopy	543 0057 105	0,3

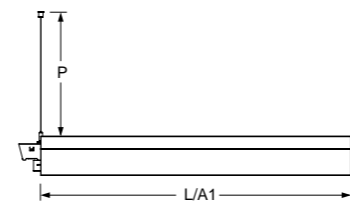


serio-HIT LB + serio-G

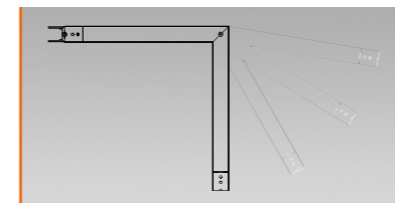
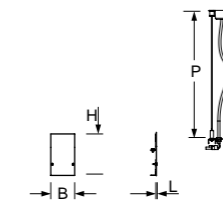


Type	L	B	H	A1	Pmin	Pmax
serio-HIT/0800 LB	845	61	106	845	150	2000
serio-HIT/1100 LB	1125	61	106	1125	150	2000
serio-HIT/1400 LB	1405	61	106	1405	150	2000
serio-HIT/2200 LB	2245	61	106	2245	150	2000
serio-HIT/2800 LB	2805	61	106	2805	150	2000
serio-HITE A/E LB	1	61	106		150	2000

serio-HIT LB



serio-HITE A/E LB



Corner profile
see Page 48

serio-HIT/1400 + serio-G
7700lm 840

η_{LB} 100%

Direct 64%
Indirect 36%
UGR lat. 22,0
UGR long. 23,2

A++

serio-HIT LB

IP20

Housing

Aluminium profile, naturally anodised. Also available in textured paint traffic white (similar to RAL 9016) or deep black (similar to RAL 9005). Other housing colours on request.

serio-HIT LB System luminaire for endless diffusor serio-G.

Lighting technology -HIT

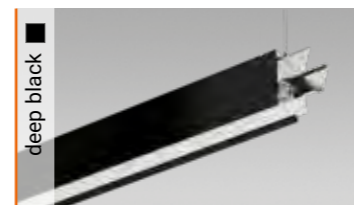
Direct/indirect distribution, DALI Variant separately dimmable. Constant indirect share via white-opal, satin-finished acrylic diffusor throughout all system components. Direct share via white-opal, satin-finished acrylic endless diffusor serio-G. Rated life time = L80 B10 50.000h. Light colour: 4000K. Optional: 3000K. Other light colours on request.

Suspension

For system profile serio-HIT LB one wire suspension is in scope of delivery. Free height adjustment between 150 and 2000mm.

Accessories

Endless diffusor serio-G for direct share must be ordered separately according to total system length. For open lighting system designs one face-end set serio-HITE A/E, for closed lighting system designs one connection cable serio-AL must be ordered separately.

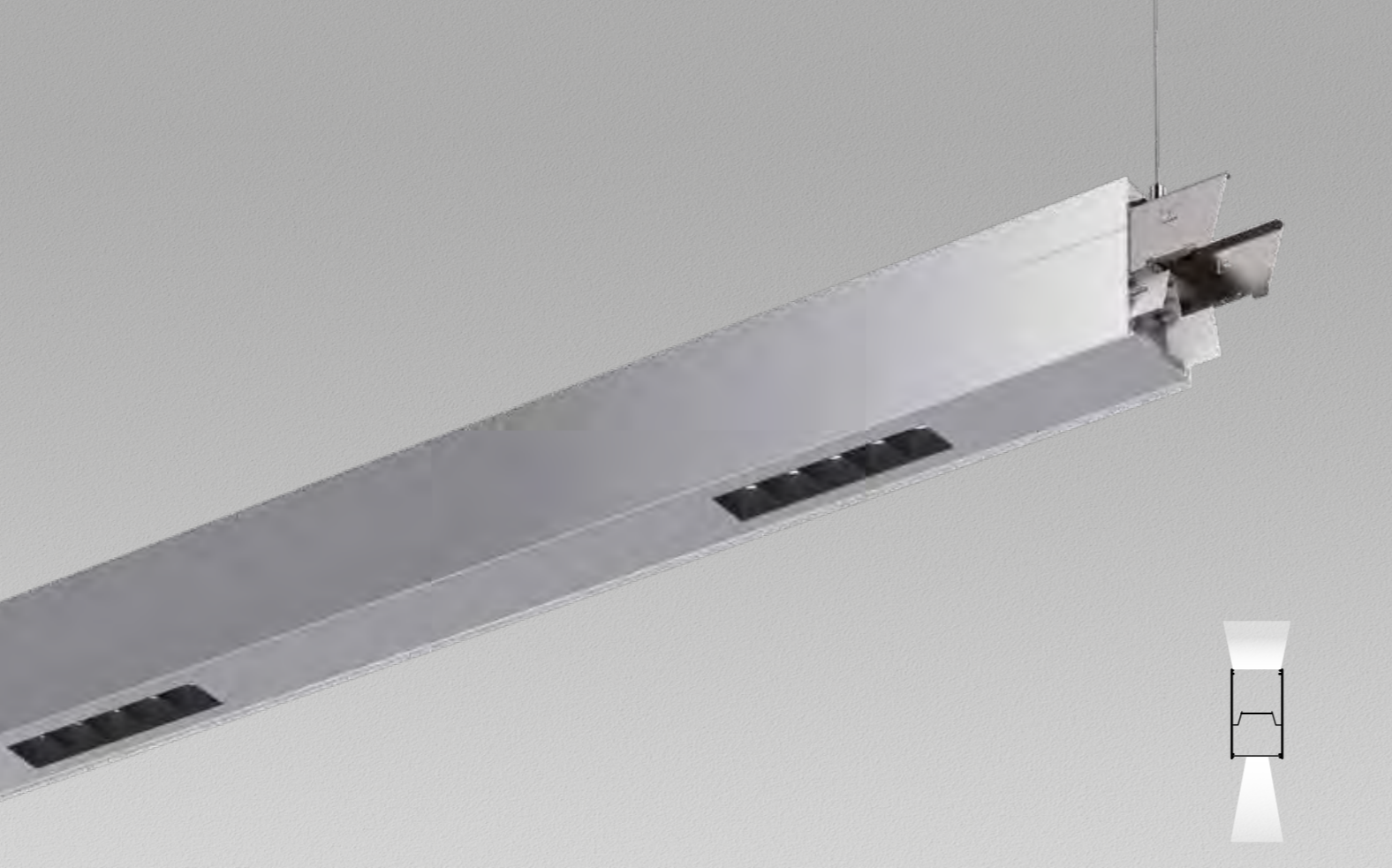


Type	Colour	LED Specification	P _{sys} (W)	ED	DALI	
serio-HIT/0800 LB		LED 2400lm 840 LB	20	543 3044 105		3,1
		LED 4500lm 840 LB	41	543 3144 105	543 3146 605	3,1
serio-HIT/1100 LB		LED 3200lm 840 LB	26	543 4044 105		4,1
		LED 6000lm 840 LB	55	543 4144 105	543 4146 605	4,1
serio-HIT/1400 LB		LED 4100lm 840 LB	34	543 5044 105		5,3
		LED 7700lm 840 LB	71	543 5144 105	543 5146 605	5,3
serio-HIT/2200 LB		LED 6400lm 840 LB	53	543 8044 105		8
		LED 12000lm 840 LB	110	543 8144 105	543 8146 605	8
serio-HIT/2800 LB		LED 8200lm 840 LB	68	543 0044 105		10
		LED 15400lm 840 LB	142	543 0144 105	543 0146 605	10

► Please refer to the current data for LED luminaires at www.lichtwerk.de



Accessories	Type	Colour	Material	Details	Item-number	
Endless diffusor	serio-G/06000 diffusor		PMMA	Acrylic endless diffusor 6m	543 0600 180	0,7
	serio-G/10000 diffusor		PMMA	Acrylic endless diffusor 10m	543 1000 180	1,1
	serio-G/20000 diffusor		PMMA	Acrylic endless diffusor 20m	543 2000 180	2,2
Face-end set	serio-HITE A/E LB Set 3x0,75		Mix	2x face ends, 1x suspension 1x connection cable 3 pol. incl. ceiling canopy	543 0137 105	0,4
	serio-HITE A/E LB Set 5x0,75		Mix	2x face ends, 1x suspension 1x connection cable 5 pol. incl. ceiling canopy	543 0157 105	0,5
Connection cable	serio-AL 3x0,75		Mix	Connection cable 3 pol. incl. ceiling canopy	543 0037 105	0,2
	serio-AL 5x0,75		Mix	Connection cable 5 pol. incl. ceiling canopy	543 0057 105	0,3



serio-HITES LB

IP20 L9 L V E CE

Housing

Aluminium profile, naturally anodised. Also available in textured paint traffic white (similar to RAL 9016) or deep black (similar to RAL 9005). Other housing colours on request.

serio-HITES LB System luminaire with integrated built-in spotlights.

Lighting technology -HITES

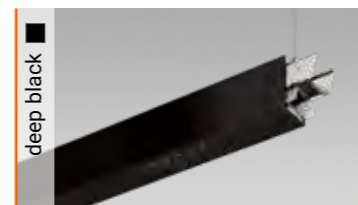
Direct/indirect distribution, DALI Variant separately dimmable. Constant indirect share via white-opal, satin-finished acrylic diffuser throughout all system components. Direct share via integrated built-in spotlights; beam angle 25°. UGR ≤ 19. Rated life time = L80 B10 50.000h. Light colour: 4000K. Optional: 3000K. Other light colours on request.

Suspension

For system profile serio-HITES LB one wire suspension is in scope of delivery. Free height adjustment between 150 and 2000mm.

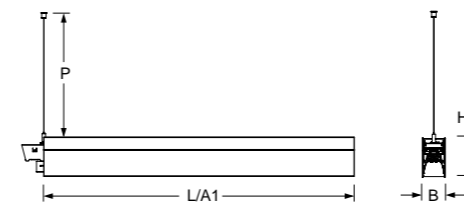
Accessories

For open lighting system designs one face-end set serio-HITE A/E, for closed lighting system designs one connection cable serio-AL must be ordered separately.

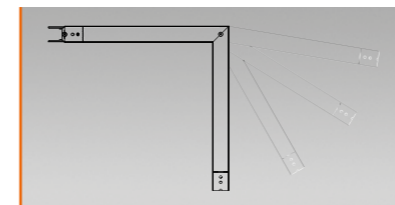
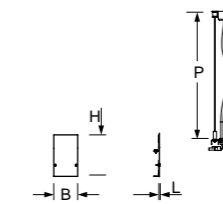


Type	L	B	H	A1	P _{min}	P _{max}
serio-HITES/1100	1125	61	106	1125	150	2000
serio-HITES/1700	1685	61	106	1685	150	2000
serio-HITE A/E LB	1	61	106		150	2000

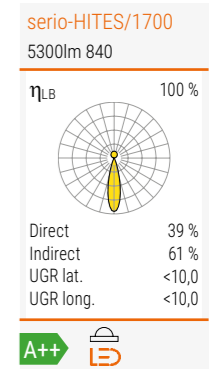
serio-HITES LB



serio-HITE A/E LB



Corner profile
see Page 48

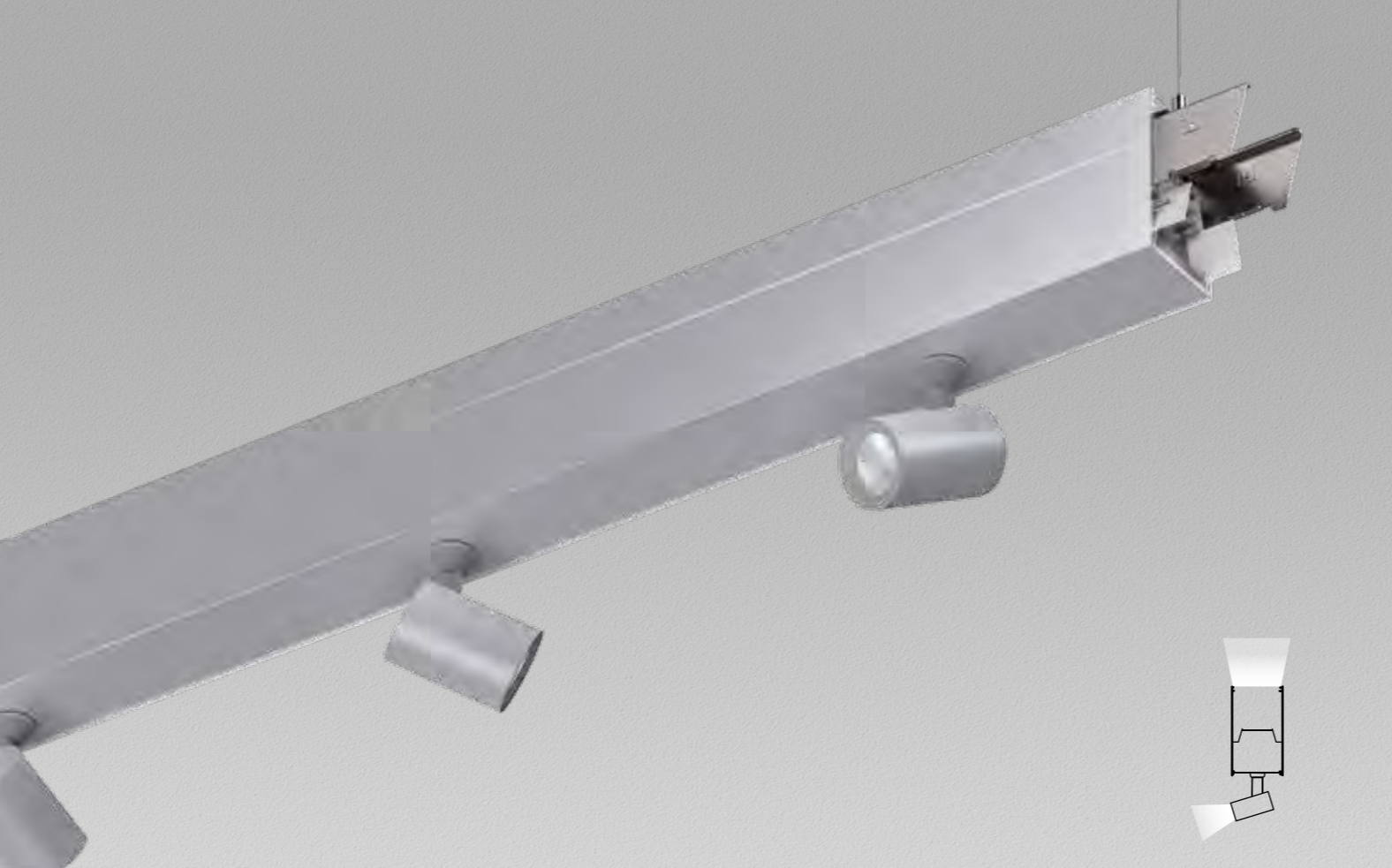


Type	Colour	LED Specification	P _{sys} (W)	ED	€	DALI	€	$\frac{\text{kg}}$
serio-HITES/1100	■	LED 2600lm 840	25	543 4044 175	375,00			5,1
serio-HITES/1100	■	LED 3500lm 840	34	543 4144 175	377,00	543 4146 675	429,00	5,1
serio-HITES/1700	■	LED 3700lm 840	36	543 6044 175	472,00			7,6
serio-HITES/1700	■	LED 5300lm 840	50	543 6144 175	474,00	543 6146 675	528,00	7,6

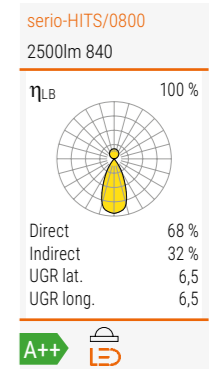
► Please refer to the current data for LED luminaires at www.lichtwerk.de



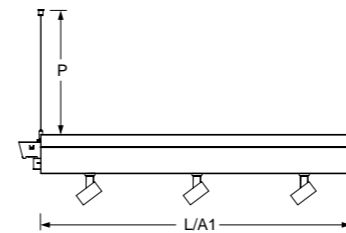
Accessories	Type	Colour	Material	Details	Item-number	$\frac{\text{kg}}$
Face-end set	serio-HITE A/E LB Set 3x0,75	■	Mix	2x face ends, 1x suspension 1x connection cable 3 pol. incl. ceiling canopy	543 0137 105	0,4
	serio-HITE A/E LB Set 5x0,75	■	Mix	2x face ends, 1x suspension 1x connection cable 5 pol. incl. ceiling canopy	543 0157 105	0,5
Connection cable	serio-AL 3x0,75	■	Mix	Connection cable 3 pol. incl. ceiling canopy	543 0037 105	0,2
	serio-AL 5x0,75	■	Mix	Connection cable 5 pol. incl. ceiling canopy	543 0057 105	0,3



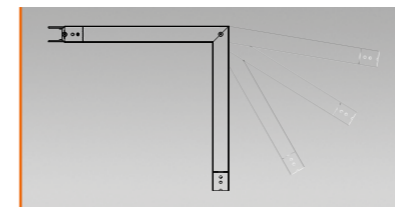
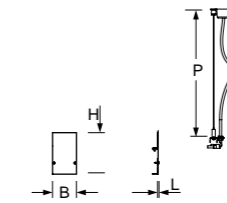
Type	L	B	H	A1	Pmin	Pmax
serio-HITS/0800 LB	845	61	190	845	150	2000
serio-HITE A/E LB	1	61	190		150	2000



serio-HITS LB



serio-HITE A/E LB



Corner profile
see Page 48

serio-HITS LB

IP20

Housing

Aluminium profile incl. LED-unit for indirect share, naturally anodised. Also available in textured paint traffic white (similar to RAL 9016) or deep black (similar to RAL 9005). Other housing colours on request. Three integrated surface mounted spotlights at the bottom of the housing.

serio-HITS LB System luminaire with three integrated surface mounted spotlights.

Lighting technology -HITS

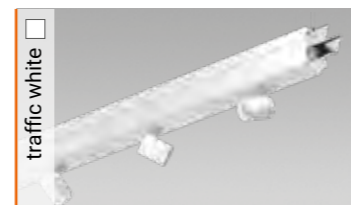
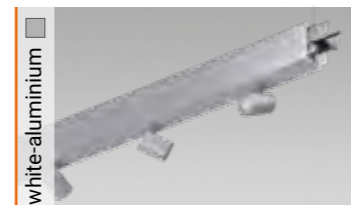
Direct/indirect distribution, DALI Variant separately dimmable. Constant indirect share via white-opal, satin-finished acrylic diffuser throughout all system components. Direct share via three integrated surface mounted spotlights; beam angle 40°. Rated life time = L80 B10 50.000h. Light colour: 4000K. Optional: 3000K. Other light colours on request.

Suspension

For system profile serio-HITS LB one wire suspension is in scope of delivery. Free height adjustment between 150 and 2000mm.

Accessories

For open lighting system designs one face-end set serio-HITE A/E LB, for closed lighting system designs one connection cable serio-AL must be ordered separately.



Type	Colour	LED Specification	P _{sys} (W)	ED	DALI	kg
serio-HITS/0800 LB	■	LED 1900lm 840 LB	17	543 3044 145		4,0
serio-HITS/0800 LB	■	LED 2700lm 840 LB	25	543 3144 145	543 3146 645	4,0

► Please refer to the current data for LED luminaires at www.lichtwerk.de



Accessories	Type	Colour	Material	Details	Item-number	kg
Face-end set	serio-HITE A/E LB Set 3x0,75	■	Mix	2x face ends, 1x suspension 1x connection cable 3 pol. incl. ceiling canopy	543 0137 105	0,4
	serio-HITE A/E LB Set 5x0,75	■	Mix	2x face ends, 1x suspension 1x connection cable 5 pol. incl. ceiling canopy	543 0157 105	0,5
Connection cable	serio-AL 3x0,75	■	Mix	Connection cable 3 pol. incl. ceiling canopy	543 0037 105	0,2
	serio-AL 5x0,75	■	Mix	Connection cable 5 pol. incl. ceiling canopy	543 0057 105	0,3



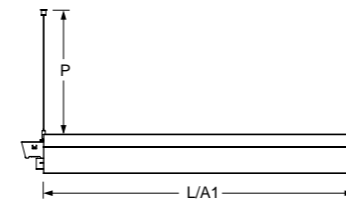
Type	L	B	H	A1	Pmin	Pmax
serio-HITD/0800 LB	845	61	106	845	150	2000
serio-HITD/1100 LB	1125	61	106	1125	150	2000
serio-HITD/1400 LB	1405	61	106	1405	150	2000
serio-HITE A/E LB	1	61	106		150	2000

serio-HITD/1400
2800lm 840

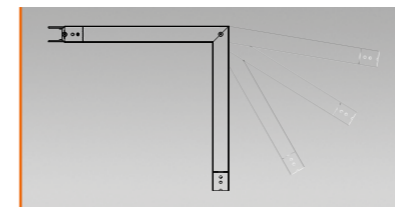
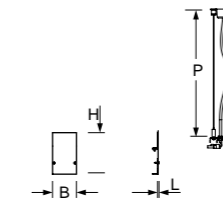
Direct 0 %
Indirect 100 %
UGR lat.
UGR long.

A++

serio-HITD LB



serio-HITE A/E LB



Corner profile
see Page 48

serio-HITD LB

IP20

Housing

Aluminium profile incl. LED-unit for indirect share, naturally anodised. Also available in textured paint traffic white (similar to RAL 9016) or deep black (similar to RAL 9005). Other housing colours on request. The integrated three-phase-track + DALI is able to carry emphara or spotty series spotlights. Other standard track lights can also be mounted. Seven-pole phase track, 3x 10A/N/PE + DALI. 5 poles usable.

serio-HITD LB System luminaire with integrated DPSN-three-phase-track + DALI.

Lighting technology

Indirect distribution.

Constant indirect share via white-opal, satin-finished acrylic diffuser throughout all system components.

Rated life time = L80 B10 50.000h.

Light colour: 4000K. Optional: 3000K. Other light colours on request.

Suspension

For system profile serio-HITD LB one wire suspension is in scope of delivery.

Free height adjustment between 150 and 2000mm.

Accessories

For open lighting system designs the face-end set serio-HITE A/E LB, for closed lighting system designs the connection cable serio-AL must be ordered separately.



Type	Usable DPSN space	max. number emphara	max. number spotty	max. load
serio-HITD/0800 LB	540mm	2	2	6,8
serio-HITD/1100 LB	820mm	3	3	5,4
serio-HITD/1400 LB	1100mm	3	4	4,0

► Don't exceed max. load!

Type	Colour	LED Specification	P _{sys} (W)	ED	DALI	kg
serio-HITD/0800 LB		LED 900lm 840 LB	7	543 3044 135		4,2
serio-HITD/0800 LB		LED 1600lm 840 LB	14	543 3144 135	543 3146 635	4,2
serio-HITD/1100 LB		LED 1200lm 840 LB	9	543 4044 135		5,6
serio-HITD/1100 LB		LED 2200lm 840 LB	19	543 4144 135	543 4146 635	5,6
serio-HITD/1400 LB		LED 1500lm 840 LB	11	543 5044 135		7
serio-HITD/1400 LB		LED 2800lm 840 LB	24	543 5144 135	543 5146 635	7

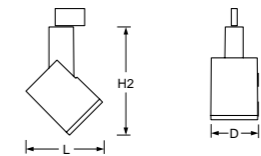
► Please refer to the current data for LED luminaires at www.lichtwerk.de



Accessories	Type	Colour	Material	Details	Item-number	kg
Face-end set	serio-HITE A/E LB Set 3x0,75		Mix	2x face ends, 1x suspension 1x connection cable 3 pol. incl. ceiling canopy	543 0137 105	0,4
	serio-HITE A/E LB Set 5x0,75		Mix	2x face ends, 1x suspension 1x connection cable 5 pol. incl. ceiling canopy	543 0157 105	0,5
Connection cable	serio-AL 3x0,75		Mix	Connection cable 3 pol. incl. ceiling canopy	543 0037 105	0,2
	serio-AL 5x0,75		Mix	Connection cable 5 pol. incl. ceiling canopy	543 0057 105	0,3



Type	L	H	H2	D
emphara-EMTT	180	145	254	110

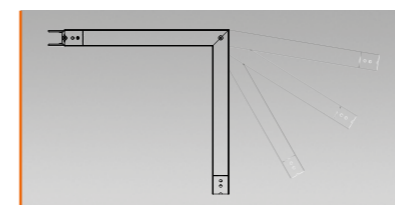


emphara-EMTT
3000lm 840

η_{LB} 100 %

Direct 100 %
Indirect 0 %
UGR lat. 16,6
UGR long. 16,6

A++



Corner profile
see Page 48

emphara-EMTT

IP20

Housing

LED track spotlight, can be turned 350° and swiveled 90°. Compact spotlight unit made of die-cast aluminium with driver integrated into hinged arm. Painted silver, traffic white or black.

Lighting technology -EMTT

Direct narrow distribution. reflector made of highly faceted reflector of efficient MIRO-SILVER aluminium with reflection coefficient of 99.8%; beam angle 30°; clear safety glass; Rated life time = L80 B10 50.000h. Light colour: 4000K or 3000K. Other light colours on request.

Miscellaneous

Integrated electronic LED driver; connection via universal three-phase track adapter, or for dimmable luminaires via three-phase DALI adapter for DPSN.

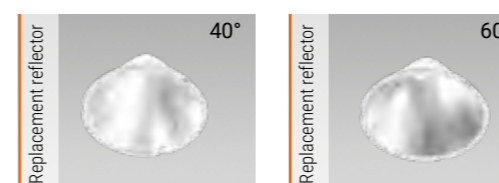
Accessories

Replacement reflector 40° highly specular faceted or 60° matt segmented must be ordered separately.



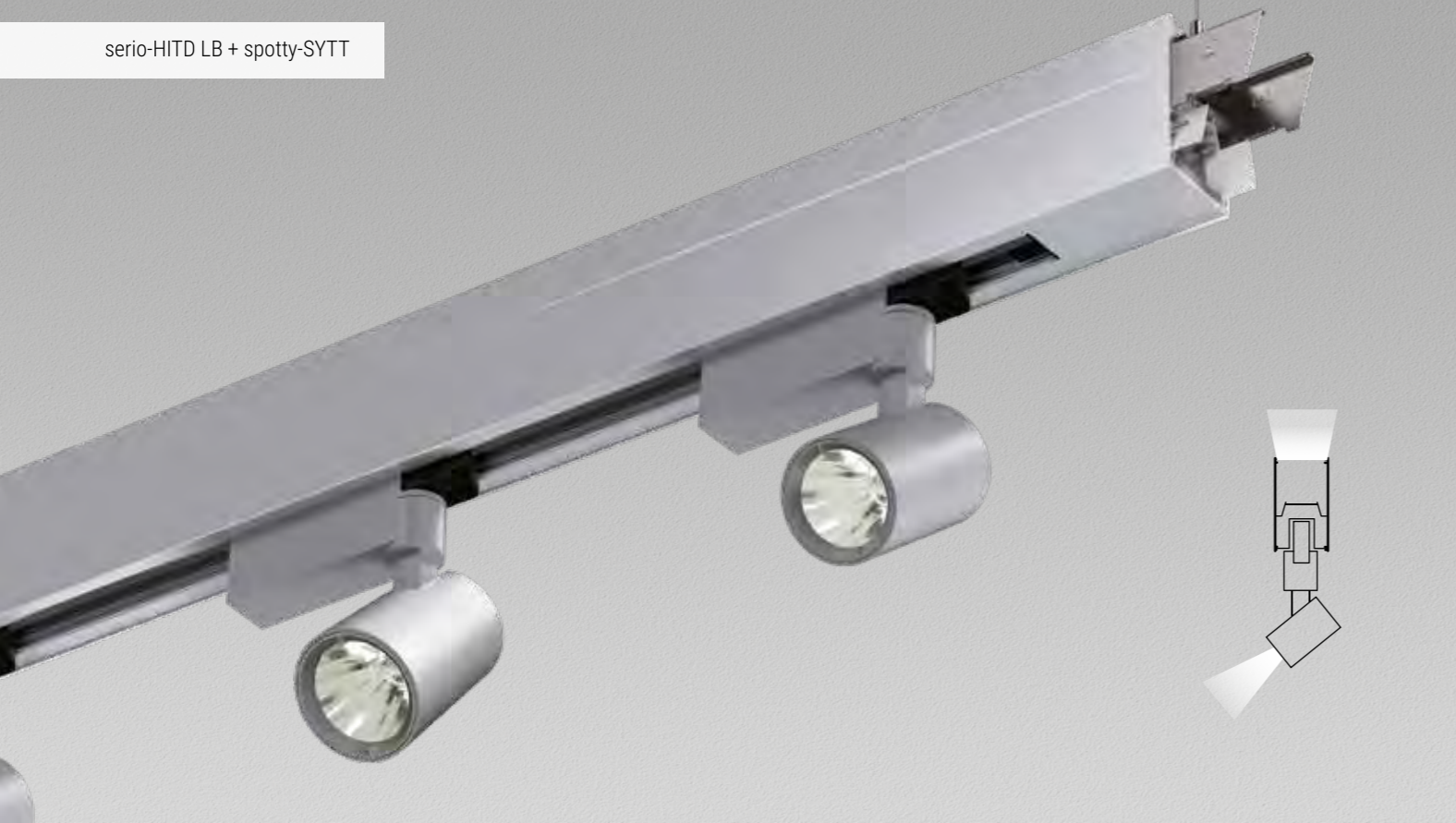
Type	LED Specification	α	P _{sys} (W)	Colour	ED	DALI	
emphara-EMTT/110	LED 2900lm 830	30°	25		351 1014 135	351 1016 635	1,2
	LED 2900lm 830	30°	25		351 1014 130	351 1016 630	1,2
	LED 2900lm 830	30°	25		351 1014 134	351 1016 634	1,2
	LED 3900lm 830	30°	36		351 2014 135	351 2016 635	1,2
	LED 3900lm 830	30°	36		351 2014 130	351 2016 630	1,2
	LED 3900lm 830	30°	36		351 2014 134	351 2016 634	1,2
	LED 3000lm 840	30°	25		351 1024 135	351 1026 635	1,2
	LED 3000lm 840	30°	25		351 1024 130	351 1026 630	1,2
	LED 3000lm 840	30°	25		351 1024 134	351 1026 634	1,2
	LED 4100lm 840	30°	36		351 2024 135	351 2026 635	1,2
LED 4100lm 840	30°	36		351 2024 130	351 2026 630	1,2	
LED 4100lm 840	30°	36		351 2024 134	351 2026 634	1,2	

► Please refer to the current data for LED luminaires at www.lichtwerk.de

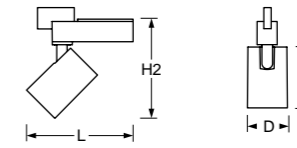


Accessories	Type	Colour	Material	Details	Item-number		
	Replacement reflector	40°/D=110		Al	Beam angle 40°, highly specular faceted	350 4014 140	0,1
		60°/D=110		Al	Beam angle 60°, matt segmented	350 0004 160	0,1

serio-HITD LB + spotty-SYTT



Type	L	H	H2	D
spotty-SYTT	201	114	182	75

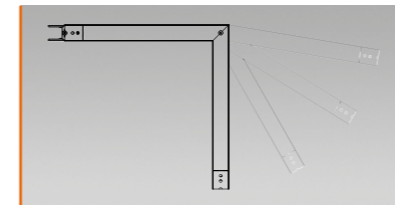


spotty-SYTT
2700lm 940

η_{LB} 100 %

Direct 100 %
Indirect 0 %
UGR lat. 15,8
UGR long. 15,8

A++



Corner profile
see Page 48

spotty-SYTT

IP20

Housing

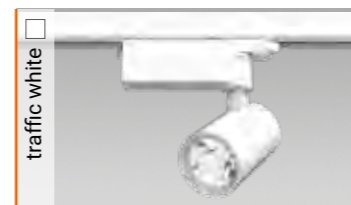
LED track spotlight, can be turned 350° and swiveled 90°. Increased CRI90. Compact spotlight unit made of die-cast aluminium with thermal separated technology housing. Painted silver, traffic white or black.

Lighting technology -SYTT

Direct narrow light distribution. Light distribution using matt segmented reflector made of highly efficient MIRO-SILVER aluminium with reflection coefficient of 99.8%; Beam angle 36°; clear safety glass; Rated life time = L80 B50 50.000h. Light colour: 4000K or 3000K. Other light colours on request.

Miscellaneous

Integrated electronic LED driver; connection via universal three-phase track adapter, or for dimmable luminaires via three-phase DALI adapter for DPSN.



Type	LED Specification	α	P _{sys} (W)	Colour	ED	DALI	kg
spotty-SYTT	LED 2600lm 930	36°	24		359 1014 135	359 1016 635	0,9
	LED 2600lm 930	36°	24		359 1014 130	359 1016 630	0,9
	LED 2600lm 930	36°	24		359 1014 134	359 1016 634	0,9
spotty-SYTT	LED 2700lm 940	36°	24		359 1024 135	359 1026 635	0,9
	LED 2700lm 940	36°	24		359 1024 130	359 1026 630	0,9
	LED 2700lm 940	36°	24		359 1024 134	359 1026 634	0,9

► Please refer to the current data for LED luminaires at www.lichtwerk.de



serio-HITL 90° LB + serio-G



serio-HITL 90°...LB
serio-HITR 90°...LB

IP20

Housing

Aluminium profile formed as 90°-angle, naturally anodised. Also available in textured paint traffic white (similar to RAL 9016) or deep black (similar to RAL 9005). Other housing colours on request.

serio-HITL LB System luminaire (left corner) for endless diffusor serio-G.

serio-HITR LB System luminaire (right corner) for endless diffusor serio-G.

Lighting technology

Direct/indirect distribution, DALI Variant separately dimmable.

Constant indirect share via white-opal, satin-finished acrylic diffusor throughout all system components.

Direct share via white-opal, satin-finished acrylic endless diffusor serio-G.

Rated life time = L80 B10 50.000h.

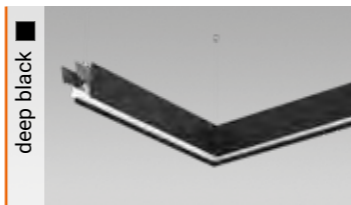
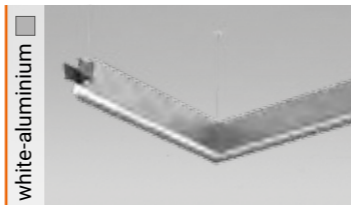
Light colour: 4000K. Optional: 3000K. Other light colours on request.

Suspension

For system profile serio-HITL LB or serio-HITR LB two wire suspensions are in scope of delivery. Free height adjustment between 150 and 2000mm.

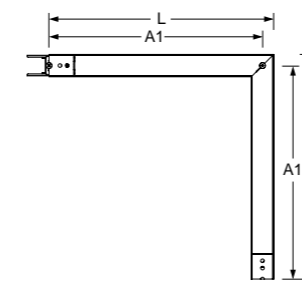
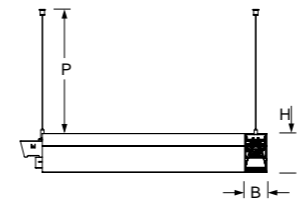
Accessories

Endless diffusor serio-G for direct share must be ordered separately according to total system length. For open lighting system designs the face-end set serio-HITE A/E LB, for closed lighting system designs the connection cable serio-AL must be ordered separately.

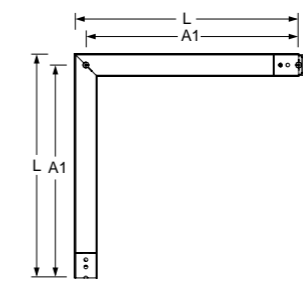
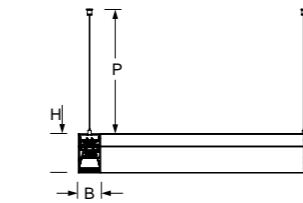


Type	L	B	H	A1	Pmin	Pmax
serio-HITL /0600 LB	615	61	106	585	150	2000
serio-HITR /0600 LB	615	61	106	585	150	2000
serio-HITE A/E LB	1	61	106		150	2000

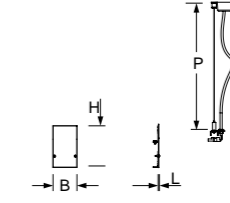
serio-HITL 90° LB



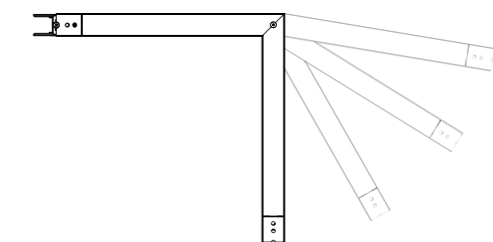
serio-HITR 90° LB



serio-HITE A/E LB



Other angles on request.



serio-HITL/0600 + serio-G
6000lm 840

Direct 64 %
Indirect 36 %
UGR lat. 16,4
UGR long. 16,4

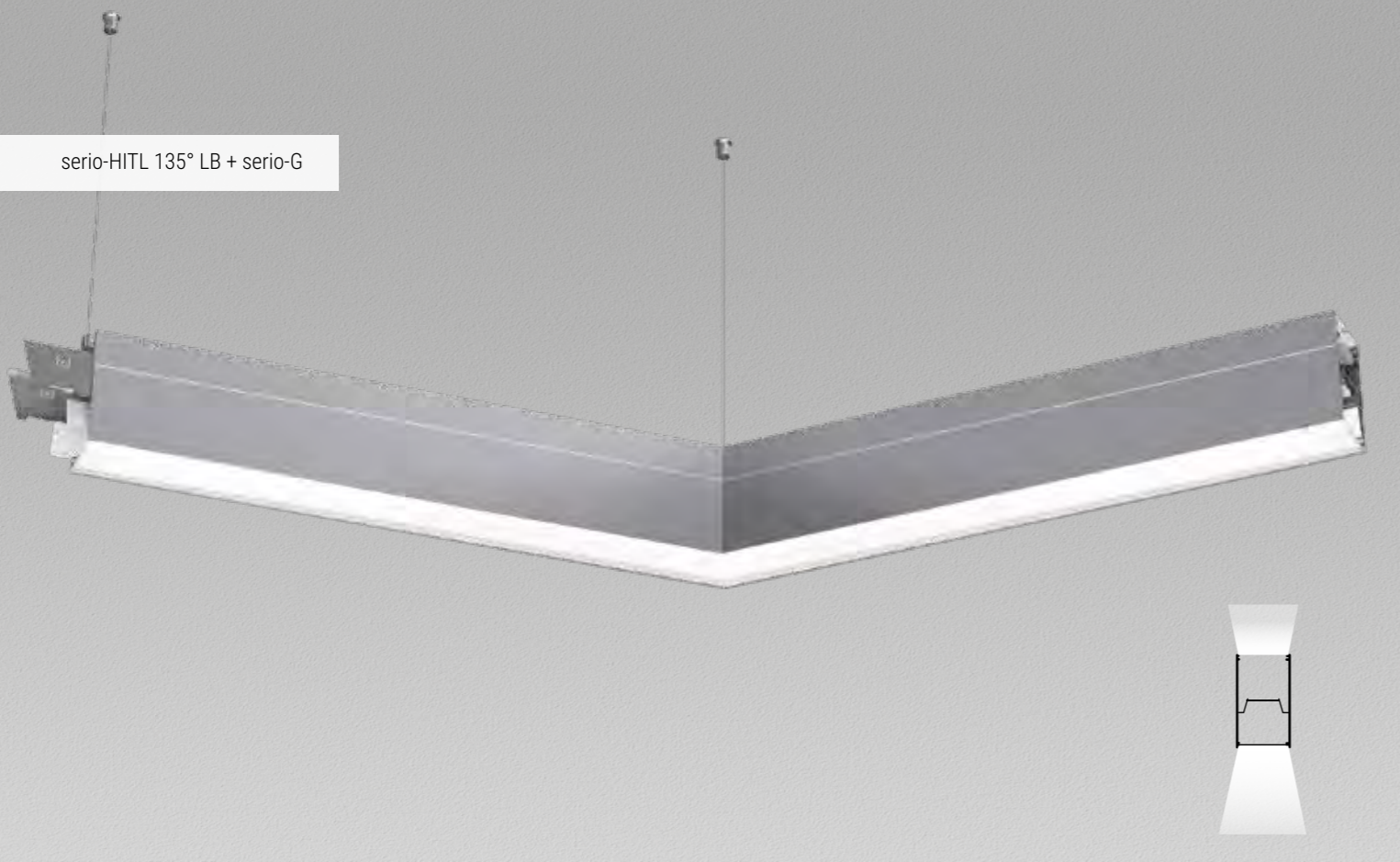
A++

Type	Colour	LED Specification	P _{sys} (W)	ED	DALI	
serio-HITL/0600 90° LB		LED 3200lm 840 LB	26	543 4044 125		4,3
		LED 6000lm 840 LB	55	543 4144 125	543 4146 625	4,3
serio-HITR/0600 90° LB		LED 3200lm 840 LB	26	543 4044 115		4,3
		LED 6000lm 840 LB	55	543 4144 115	543 4146 615	4,3

► Please refer to the current data for LED luminaires at www.lichtwerk.de



Accessories	Type	Colour	Material	Details	Item-number	
Endless diffusor	serio-G/06000 diffusor		PMMA	Acrylic endless diffusor 6m	543 0600 180	0,7
	serio-G/10000 diffusor		PMMA	Acrylic endless diffusor 10m	543 1000 180	1,1
	serio-G/20000 diffusor		PMMA	Acrylic endless diffusor 20m	543 2000 180	2,2
Face-end set	serio-HITE A/E LB Set 3x0,75		Mix	2x face ends, 1x suspension	543 0137 105	0,4
	serio-HITE A/E LB Set 5x0,75		Mix	2x face ends, 1x suspension	543 0157 105	0,5
Connection cable	serio-AL 3x0,75		Mix	1x connection cable 3 pol. incl. ceiling canopy	543 0037 105	0,2
	serio-AL 5x0,75		Mix	1x connection cable 5 pol. incl. ceiling canopy	543 0057 105	0,3



serio-HITL 135° LB + serio-G

serio-HITL 135°...LB
serio-HITR 135°...LB

IP20

Housing

Aluminium profile formed as 135°-angle, naturally anodised. Also available in textured paint traffic white (similar to RAL 9016) or deep black (similar to RAL 9005). Other housing colours on request.

serio-HITL 135° LB System luminaire 135° (left corner) for endless diffusor serio-G.
serio-HITR 135° LB System luminaire 135° (right corner) for endless diffusor serio-G.

Lighting technology

Direct/indirect distribution, DALI Variant separately dimmable.
Constant indirect share via white-opal, satin-finished acrylic diffusor throughout all system components.
Direct share via white-opal, satin-finished acrylic endless diffusor serio-G.
Rated life time = L80 B10 50.000h.
Light colour: 4000K. Optional: 3000K. Other light colours on request.

Suspension

For system profile serio-HITL LB or serio-HITR LB two wire suspensions are in scope of delivery. Free height adjustment between 150 and 2000mm.

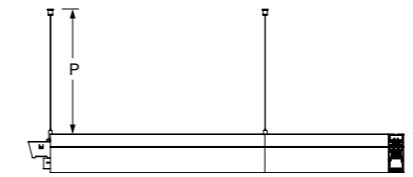
Accessories

Endless diffusor serio-G for direct share must be ordered separately according to total system length. For open lighting system designs the face-end set serio-HITE A/E LB, for closed lighting system designs the connection cable serio-AL must be ordered separately.

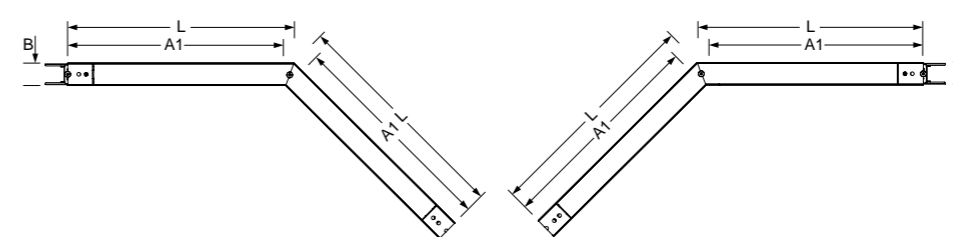
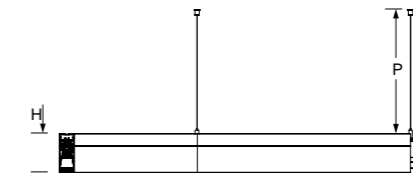


Type	L	B	H	A1	Pmin	Pmax
serio-HITL /0600 135° LB	585	61	106	570	150	2000
serio-HITR /0600 135° LB	585	61	106	570	150	2000
serio-HITE A/E LB	1	61	106		150	2000

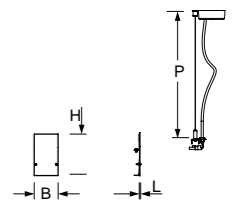
serio-HITL 135° LB



serio-HITR 135° LB



serio-HITE A/E LB



serio-HITL/0600 + serio-G
6000lm 840

η_{LB} 100 %

Direct 64 %
Indirect 36 %
UGR lat. 15,8
UGR long. 16,4

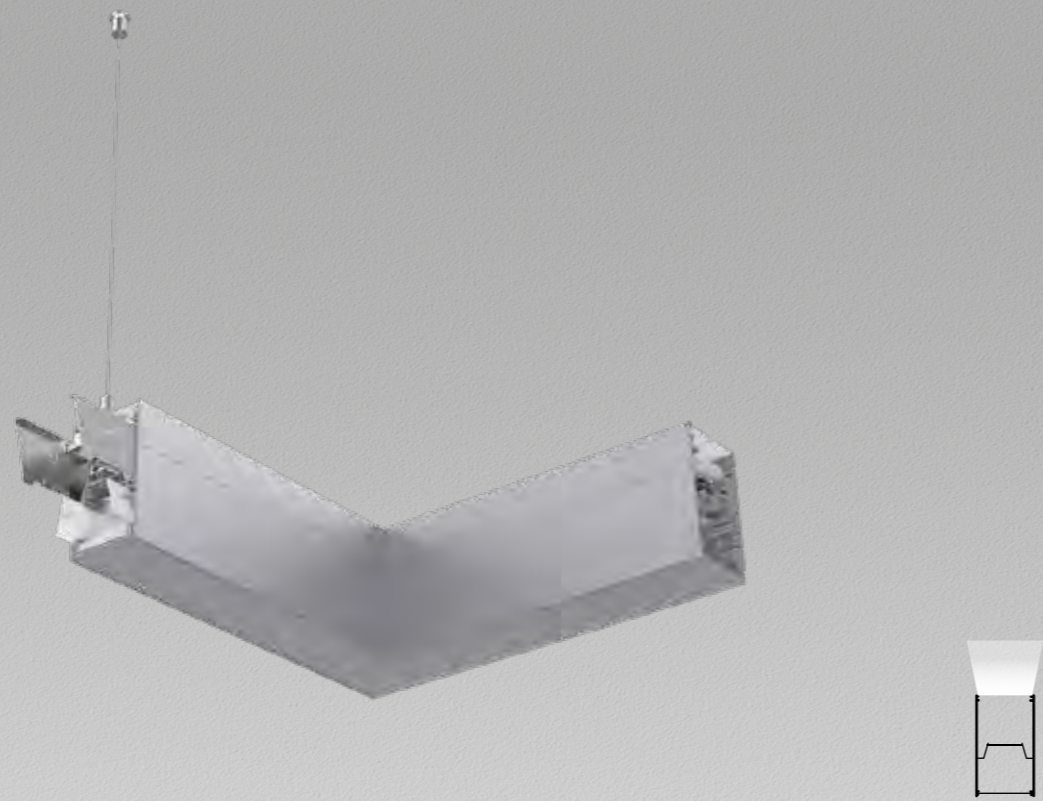
A++

Type	Colour	LED Specification	P _{sys} (W)	ED	DALI	
serio-HITL/0600 135° LB		LED 3200lm 840 LB	26	546 4044 125		4,3
		LED 6000lm 840 LB	55	546 4144 125	546 4146 625	4,3
serio-HITR/0600 135° LB		LED 3200lm 840 LB	26	546 4044 115		4,3
		LED 6000lm 840 LB	55	546 4144 115	546 4146 615	4,3

► Please refer to the current data for LED luminaires at www.lichtwerk.de



Accessories	Type	Colour	Material	Details	Item-number	
Endless diffusor	serio-G/06000 diffusor		PMMA	Acrylic endless diffusor 6m	543 0600 180	0,7
	serio-G/10000 diffusor		PMMA	Acrylic endless diffusor 10m	543 1000 180	1,1
	serio-G/20000 diffusor		PMMA	Acrylic endless diffusor 20m	543 2000 180	2,2
Face-end set	serio-HITE A/E LB Set 3x0,75		Mix	2x face ends, 1x suspension 1x connection cable 3 pol. incl. ceiling canopy	543 0137 105	0,4
	serio-HITE A/E LB Set 5x0,75		Mix	2x face ends, 1x suspension 1x connection cable 5 pol. incl. ceiling canopy	543 0157 105	0,5
Connection cable	serio-AL 3x0,75		Mix	Connection cable 3 pol. incl. ceiling canopy	543 0037 105	0,2
	serio-AL 5x0,75		Mix	Connection cable 5 pol. incl. ceiling canopy	543 0057 105	0,3



serio-HITBL 90°...LB
serio-HITBR 90°...LB

IP20

Housing

Aluminium profile formed as 90°-angle, naturally anodised. Also available in textured paint traffic white (similar to RAL 9016) or deep black (similar to RAL 9005). Other housing colours on request.

serio-HITBL 90° LB System luminaire 90° (left corner).
serio-HITBR 90° LB System luminaire 90° (right corner).

Lichttechnik -HITB

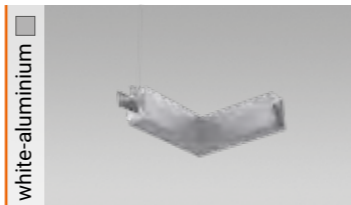
Indirect distribution only.
 Constant indirect share via white-opal, satin-finished acrylic diffuser throughout all system components.
 Rated life time = L80 B10 50.000h.
 Light colour: 4000K. Optional: 3000K. Other light colours on request.

Suspension

For system profile serio-HITBL LB or serio-HITBR LB one wire suspension is in scope of delivery. Free height adjustment between 150 and 2000mm.

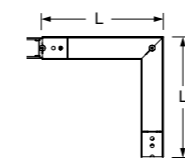
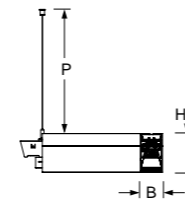
Accessories

For open lighting system designs the face-end set serio-HITE A/E LB, for closed lighting system designs the connection cable serio-AL must be ordered separately.

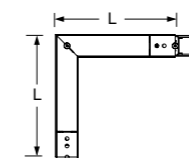
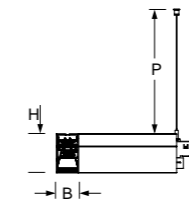


Type	L	B	H	Pmin	Pmax
serio-HITBL /0300 LB	335	61	106	150	2000
serio-HITBR /0300 LB	335	61	106	150	2000
serio-HITE A/E LB	1	61	106	150	2000

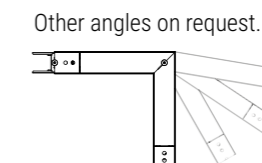
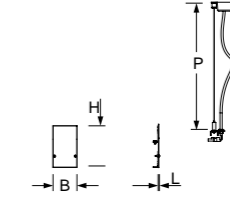
serio-HITBL 90° LB



serio-HITBR 90° LB



serio-HITE A/E LB



serio-HITBL/0300
 1000lm 840

Direct 0 %
 Indirect 100 %
 UGR lat.
 UGR long.

A++

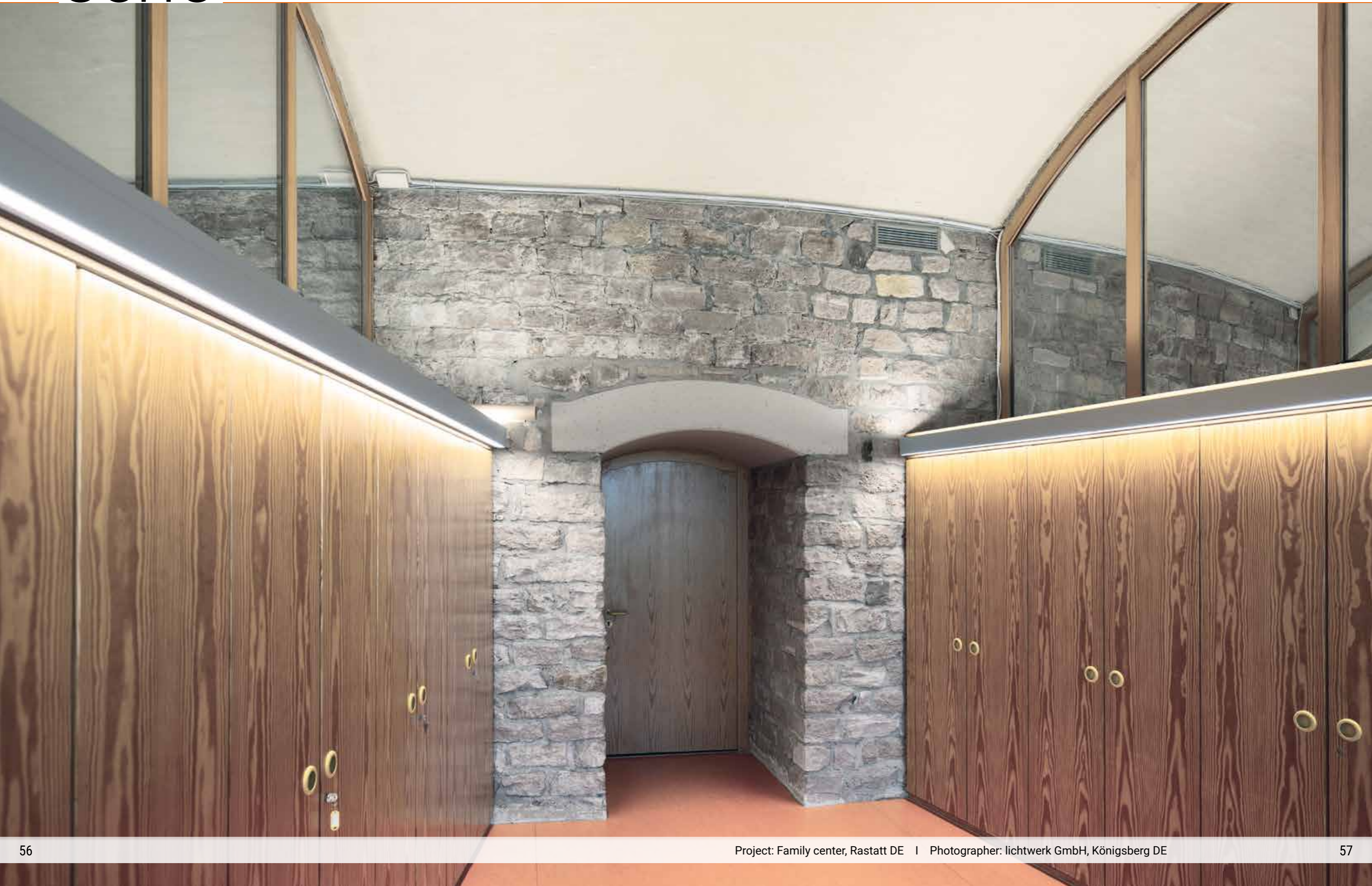
Type	Colour	LED Specification	P _{sys} (W)	ED	DALI	
serio-HITBL/0300 90° LB		LED 600lm 840 LB	5	547 2044 125		2,4
		LED 1000lm 840 LB	9	547 2144 125	547 2146 625	2,4
serio-HITBR/0300 90° LB		LED 600lm 840 LB	5	547 2044 115		2,4
		LED 1000lm 840 LB	9	547 2144 115	547 2146 615	2,4

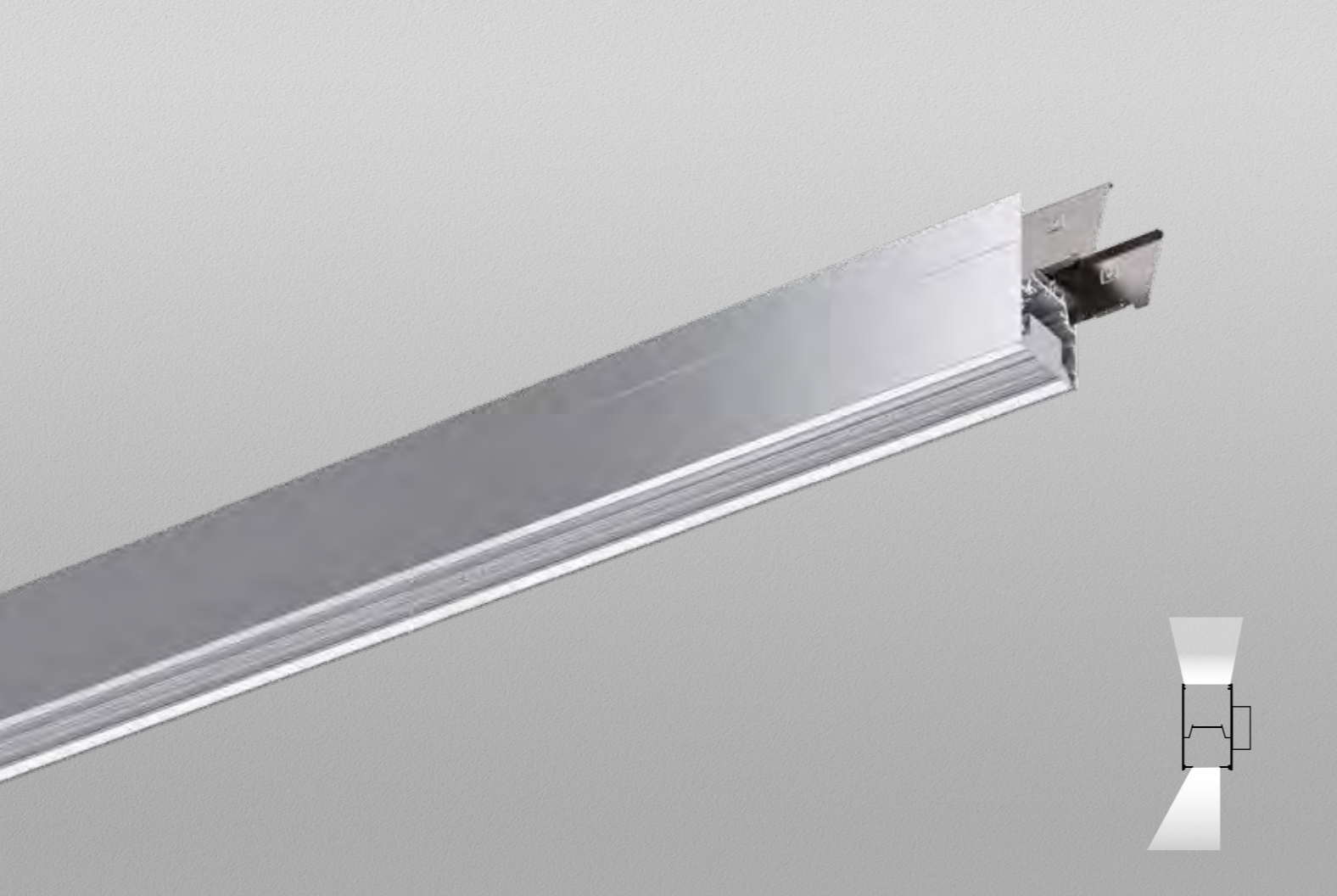
► Please refer to the current data for LED luminaires at www.lichtwerk.de



Accessories	Type	Colour	Material	Details	Item-number	
Face-end set	serio-HITE A/E LB Set 3x0,75		Mix	2x face ends, 1x suspension	543 0137 105	0,4
				1x connection cable 3 pol. incl. ceiling canopy		
Face-end set	serio-HITE A/E LB Set 5x0,75		Mix	2x face ends, 1x suspension	543 0157 105	0,5
				1x connection cable 5 pol. incl. ceiling canopy		
Connection cable	serio-AL 3x0,75		Mix	Connection cable 3 pol. incl. ceiling canopy	543 0037 105	0,2
				serio-AL 5x0,75		







Type	L	B	T	H	A1	A2	X	Y
serio-WITFA/0800 LB	845	61	86	106	610	235	46	72
serio-WITFA/1100 LB	1125	61	86	106	890	235	46	72
serio-WITFA/1400 LB	1405	61	86	106	1170	235	46	72
serio-WITFA/2200 LB	2245	61	86	106	2010	235	46	72
serio-WITFA/2800 LB	2805	61	86	106	2570	235	46	72
serio-WITE A/E LB	1	61		106				

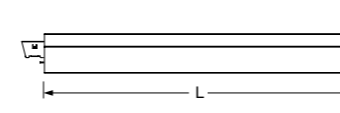
serio-WITFA/1400
8000lm 840

η_{LB} 100%

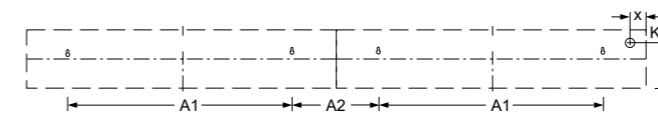
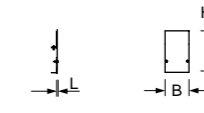
Direct 45%
Indirect 55%
UGR lat. 22,3
UGR long. 20,2

A++

serio-WITFA LB



serio-WITE A/E LB



serio-WIFA

IP20

Housing

Aluminium profile, naturally anodised. Also available in textured paint traffic white (similar to RAL 9016) or deep black (similar to RAL 9005). Other housing colours on request.

Lighting technology -WITFA

Direct/indirect distribution, DALI variant separately dimmable. Direct asymmetric light distribution via Fresnel lens made from acrylic. Indirect share via white-opal, satin-finished endless diffusor serio-G. Rated life time = L80 B10 50.000h. Light colour: 4000K. Optional: 3000K. Other light colours on request.

Miscellaneous

Electrical connection via five-pole feed-in and connection terminal with plug-in technology; with integrated protective earth connection and unlocking button, suitable for rigid and flexible cables up to 2,5mm². 5-pole through wiring plug-in system 10A. Mounting system to compensate uneven surfaces (1-15mm).

Accessories

Face ends serio-WITE A/E LB and endless diffusor serio-G for indirect share, must be ordered separately according to total system length.



Type	Colour	LED Specification	P _{sys} (W)	ED	DALI	
serio-WITFA/0800 LB		LED 2400lm 840 LB	19	443 3044 105		4,3
		LED 4700lm 840 LB	41	443 3144 105	443 3146 605	4,3
serio-WITFA/1100 LB		LED 3200lm 840 LB	26	443 4044 105	443 4146 605	5,8
		LED 6200lm 840 LB	54	443 4144 105	443 4146 605	5,8
serio-WITFA/1400 LB		LED 4200lm 840 LB	33	443 5044 105		7
		LED 8000lm 840 LB	70	443 5144 105	443 5146 605	7
serio-WITFA/2200 LB		LED 6500lm 840 LB	52	443 8044 105		11,4
		LED 12400lm 840 LB	108	443 8144 105	443 8146 605	11,4
serio-WITFA/2800 LB		LED 8300lm 840 LB	66	443 0044 105		13,5
		LED 15900lm 840 LB	139	443 0144 105	443 0146 605	13,5

► Please refer to the current data for LED luminaires at www.lichtwerk.de



Accessories	Type	Colour	Material	Details	Item-number	
Endless diffusor	serio-G/06000 diffusor		PMMA	Acrylic endless diffusor 6m	543 0600 180	0,7
	serio-G/10000 diffusor		PMMA	Acrylic endless diffusor 10m	543 1000 180	1,1
	serio-G/20000 diffusor		PMMA	Acrylic endless diffusor 20m	543 2000 180	2,2
Face-end set	serio-WITE A/E LB		Mix	2x face ends	443 0107 105	0,2

lichtwerk GmbH

Hellinger Straße 3
97486 Königsberg
T +49 9525 9827 0
F +49 9525 9827 300
info@lichtwerk.de



www.lichtwerk.de